

ISSUE 11  
JAN - MAR 2026

# JEFFERSON

COUNTY, MISSOURI



# NEWSLETTER



## INSIDE THIS ISSUE

- High Ridge Pocket Park
- LECOM and Mercy Collaboration
- 2026 Election Information
- Redbird North Phase 2
- and MORE...

## COUNTY EXECUTIVE

Dennis Gannon

636-797-5400

## DIRECTOR OF ADMINISTRATION

David Courtway

636-797-5400

## COUNCIL MEMBERS

### District 1

Brian Haskins

636-535-7110

### District 2

Billy Crow Jr.

636-331-4732

### District 3

Lori Arons

636-535-8836

### District 4

Charles Groeteke

636-535-3352

### District 5

Scott Seek

636-232-5965

### District 6

Tim Brown

636-725-4105

### District 7

Bob Tullock

636-535-3593

**729 Maple Street  
Hillsboro, MO 63050  
636-797-5400**

# TABLE OF CONTENTS

## County News

High Ridge Pocket Park .....	3
LECOM / Mercy Collaboration .....	4
Information For Upcoming 2026 Elections .....	4
Absentee Voting Information .....	4
2026 Assessments Have Been Mailed .....	5
Paying Late Taxes .....	5
Recycling Center .....	5
Christmas Tree Recycling .....	5

## Parks and Recreation

2026 Programs .....	9
Youth Soccer .....	10

## And More

Kimmswick Great Streets Projects .....	6
Project Redbird North Phase 2 .....	6
LTAP Work Zone - Flagger Training .....	6
Boyce Lane Low Water Crossing Replacement .....	7
Sulphur Springs Road Project .....	7
Words From the County Executive .....	8
County Council Corner .....	11
Warming Centers in Jefferson County .....	12

## OFFICES CLOSED

**January 19, 2026**

*Martin Luther King, Jr. Day*

**February 12, 2026**

*Lincoln's Birthday*

**February 16, 2026**

*President's Day*

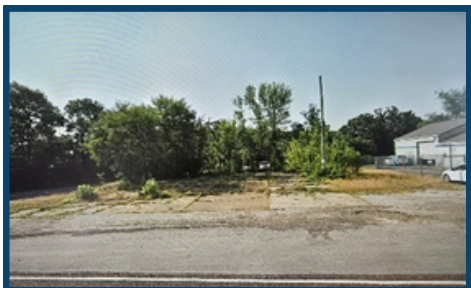
## UPCOMING MEETINGS:

Check our website for all upcoming meetings,  
agendas and journals.



# High Ridge Community Parking Lot & Pocket Park

Upon completion of the High Ridge Boulevard improvements project in 2024, the County sought to purchase a small unmaintained parcel along the boulevard. This property had become an eyesore for many years. The County contacted the existing property owner, who turned out to be a motivated seller of the parcel. After acquiring the property, the County remediated the parcel of past environmental issues from when the property was a gas station decades ago.



*Existing Parcel Prior to Development*



*Parking Lot Under Construction*



*Parking Lot Construction Completed*

The County then designed and constructed a 16-space parking lot on this 0.3-acre parcel. All this work was completed with internal staff, which greatly limited the overall cost of the project.

After completion of the community parking lot, Councilman Brian Haskins and his team worked hard to complete a four-month project to build a "Pocket Park" on this site. Generous donations from HJ Family of Companies and the High Ridge Rotary Club greatly supported the financial means to make this project a success.



*Pocket Park Ribbon Cutting Ceremony*



*High Ridge Rotary Club*



*Beautiful Butterfly Garden*

This small park is full of improvements and amenities for visitors to enjoy. These include a pavilion, playground, picnic tables, benches, Adirondack chairs, BBQ grill, portable bathroom, landscaping, and a Northwest R-1 Lion statue to show pride in our local schools! Many individuals, agencies, companies and non-profit organizations came together to make this project a success.

The collaboration of County Public Works Department, County Parks & Recreation Department, Jefferson County Parks Foundation, High Ridge Rotary Club, and valued local businesses and individuals all came together for the good of the community!



*Pocket Park Amenities on Full Display*



*Plenty of Seating for Everyone to Enjoy!*



*Northwest Lion Welcomes Guests*

# Thank You For Donating

Jefferson County, Missouri Government extends our heartfelt thanks to the citizens of Jefferson County for your incredible generosity during this year's Toys for Tots drive. Thanks to your support, over 300 toys were donated, helping bring the joy of Christmas to children in need.

## LECOM / Mercy Collaboration



On November 12, 2025, Jefferson R-VII welcomed County Executive Dennis Gannon, along with leadership from LECOM, Mercy, and students involved in the program. LECOM, The Lake Erie College of Osteopathic Medicine, is a key partner in this effort, offering potential future student placements in Festus and Cape Girardeau.

The group visited the district to record informational videos that will be shared with schools across the region to help educate students, staff, and families about the opportunities this partnership provides.



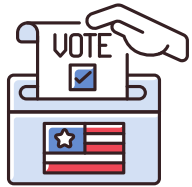
Dennis Gannon also provided Jefferson R-VII with the opportunity to highlight the LECOM–Mercy collaboration, an initiative aimed at strengthening long-term medical care in the region while creating pathways for high school students to pursue early entry into the medical field.

To read more about the new regional campus, visit [LECOM Health System News](#)

## Information For Upcoming 2026 Elections

### • **Election Information & Notices**

- Every household will be receiving an Election Information Packet including a magnet of the election dates for 2026.
- Election notices will be sent out with a copy of your sample ballot for each election.



### • **Candidate Filing**

- Filing for the August 4, 2026, Primary Election starts on February 24, 2026, and will end on March 31, 2026.

### • **No Excuse Voting**

- No excuse voting starts on March 24, 2026, at the County Clerk's Office at 729 Maple Street in Hillsboro, Missouri.

The last day to register to vote for the April Election will be March 11, 2026. If you need to register or update your registration, you can visit the website for the [County Clerk/Election Authority](#).

## Absentee Voting Information

Absentee voting for the April 7, 2026 General Municipal Election will begin on February 24, 2026. Voters are required to provide a qualifying reason in order to vote absentee, whether by mail or in person.

Residents who prefer to vote in person may do so at the Jefferson County Election Authority Office, located at 729 Maple Street, Hillsboro, MO. The office is open Monday through Friday from 8:00 a.m. to 5:00 p.m.

For those who prefer to vote by mail, absentee ballot applications can be submitted by mail to the address above or by email at [countyclerk@jeffcomo.org](mailto:countyclerk@jeffcomo.org). Voters are encouraged to apply early to ensure timely processing and delivery.

For additional updates or voter information, please visit the [Jefferson County website](#) or contact the County Clerk's Office.

## 2026 Assessments Have Been Mailed



The Jefferson County Assessor's Office mailed hard copies of personal property assessment lists the first week of January 2026. Per Missouri State Statutes, assessment lists are to be returned to the Assessor's office before March 1, 2026, to avoid late penalty.

Taxpayers still have the option to E-File their 2026 Assessment List. When you receive your 2026 Assessment list, it will provide a link to the E-File website, account number and PIN.

If you do not receive a 2026 assessment list by the end of January, please contact the Assessor's Office at 636-797-5343 or [ppassessor@jeffcomo.org](mailto:ppassessor@jeffcomo.org).

## Paying Late Taxes

Real Estate and Personal Property taxes became delinquent on January 1. In accordance with Missouri State Statute, interest and penalty charges accrue monthly on all delinquent tax balances. The interest rate increases by 2% per month for nine months of the year, resulting in additional charges the longer a balance remains unpaid. Taxpayers are encouraged to submit payment as soon as possible to avoid further penalties and interest.

Payments may be made in person at the Collector's Office, online through the [Collector's website](#), by mail, or by using the secure drop box located at the front of the Administration Building at 729 Maple Street, Hillsboro, MO 63050.

## Jefferson County Recycling Center

The Jefferson County Recycling Center is open year-round and offers convenient drop-off options for recyclable materials.

Jefferson County Recycling Center:  
335 Elm Street, Hillsboro, MO 63050

### Drop Off Hours:

Monday, Tuesday, Thursday & Friday: 8:00 a.m. – 12:00 p.m.  
Wednesday: 1:00 p.m. – 5:00 p.m.

### Items Accepted Year-Round:

- Paper
- Glass bottles, jars, and containers
- Flattened cardboard
- Food and beverage cartons
- Plastic bottles and containers
- Metal food and beverage cans

*Please note: Recycling containers previously located at the High Ridge Civic Center have been relocated to the Animal Resource Center, located at 4848 State Road 30, House Springs, MO.*

*Drop-off hours: Monday – Friday, 10:00 a.m. – 4:00 p.m.*

The [Jeffco Think 6](#) Facebook page features recycling events throughout the year. Follow them for updates and additional information.

## Christmas Tree Recycling

The Jefferson County Recycling Center is accepting artificial Christmas trees through January 15, 2026. In addition, Jefferson County Parks & Recreation will be collecting real Christmas trees at the following locations:

- Festus-Crystal City Elks Lodge: 4 Elks Drive Crystal City, MO 63019
- Pleasant Valley Nature Preserve: 6701 Twin Rivers Road Eureka, MO 63025
- Sunridge Park: 8093 Tower Road Hillsboro, MO 63050
- Courthouse Lower Parking Lot: 300 Main Street Hillsboro, MO 63050
- For Parks & Recreation questions, please call 636-797-5334.

For more information, please visit the [Parks and Recreation](#) website page.



# Kimmswick Great Streets Projects

Kimmswick Great Streets is comprised of two projects. One project will include parts of Fifth Street, Beckett Street, and Fourth Street. The other will include parts of Market Street and Front Street. The purpose of the project is to include closed drainage, sidewalks and pedestrian lighting. The sidewalks will be ADA compliant, which will create a safer pedestrian experience.



A 6' wide sidewalk will extend along the park side of Fifth Street from High Street to Beckett Street. Along Beckett Street, there will be a 10' wide Shared-Use Path from Fifth to Fourth Street. An 8' wide sidewalk will be located on the east side of Fourth Street from Beckett to Market Street.

Market Street will be converted to a 12' wide, one-lane road from Fourth to Front Street with 8' wide parking on both sides and 8' sidewalks on both sides as well. Front Street will have 6' sidewalks on both sides with 8' parking available on the west side of the road. Bidding and award of this project is anticipated over this winter.

To view the full Kimmswick Streets Project, visit [2024-2026 Kimmswick Streets Project Plans](#).

## Project Redbird North Phase 2

The Project is continuing to move forward with the completion of the Box culvert on North Access Road. We are moving on to pave the concrete on North Access Road and the asphalt temporary road so that we can detour traffic and close VFW drive.



This will allow us to move into next year and begin the demolition of the existing VFW drive and begin to raise the road embankment.

For the latest updates on all Project Redbird, please visit [Project Redbird Plans](#).

## LTAP Work Zone – Flagger Training

The County Highway Department recently hosted a Work Zone Safety and Flagger Training session in partnership with Missouri Local Technical Assistance Program (MO\_LTAP). Employees from St. Charles County and the City of Sunset Hills joined our crews for a 4-hour class of hands-on instruction and field discussions.

Led by MO\_LTAPS certified instructor Linda Webb, the training focused on:

- Proper work zone setup and traffic control practices
- Safe and effective flagging techniques
- Required safety gear and communication methods
- State and federal standards based on the MUTCD



The session blended classroom instruction with demonstrations, giving everyone the opportunity to practice skills, share experiences, and strengthen consistency between agencies.

For more information on Missouri Local Technical Assistance Program, visit [MoDOT LTAP News](#).

# Boyce Lane Low Water Crossing Replacement

In a previous edition of the Jefferson County Newsletter, our Public Works department announced funding had been granted through Missouri Department of Natural Resources (DNR) and the Federal American Rescue Plan Act (ARPA) to remove and replace the Boyce Lane Low Water Crossing. The long-anticipated project has recently begun construction and will be finished by the beginning of September 2026.

ABNA Engineering, a structural engineering firm, worked with the Department of Public Works to develop a new steel bridge. The bridge being built by PCX Construction (PCX) will consist of three intermediate bents, in addition to the two end bents for an approximate total length of 185 feet over Platin Creek.



The bridge will be skewed further south on the west side (Platin Road) to remove the previous sharp curve for motorists. Less than 1000 vehicles will travel across the steel bridge daily, and with the 26'-1" bridge deck, motorists can cross Platin Creek simultaneously preventing motorists from traveling off the roadway and into the creek.

Therefore, a high importance in the design was to add a barrier; however, due to high-frequency storms, the designed bridge rail will include openings to account for excessive rainfall.

ABNA Engineering estimated the new steel bridge would cost approximately \$2.2 million and PCX came in with a bid of \$2,030,671.00.

PCX has 130 working days and a completion date of September 4, 2026, with Jefferson County; however, working days are not counted until March 16 in accordance with the Missouri Department of Transportation Specifications for Highway Construction.

During construction, motorists will need to follow the detour route along Highway 61 to Platin Road.



For more information on all road projects, visit our [Project Plans](#).

## Sulphur Springs Road Project

Heavy rainfall in early 2019 caused significant flooding in the Sulphur Springs area, washing out sections of Sulphur Springs Road, resulting in residents having to use boats to leave their homes and leaving debris scattered along the route. Residents experienced property damage and loss of access to essential services for weeks. The flooding was similar to conditions of the flood in 1993.



An 800-foot stretch of Sulphur Springs Road between New Frontier Materials and Highway 61-67 historically floods for extended periods when the Mississippi River reaches moderate to severe flood stage. When this occurs, Glaize Creek also floods, leading to long-term road closures.

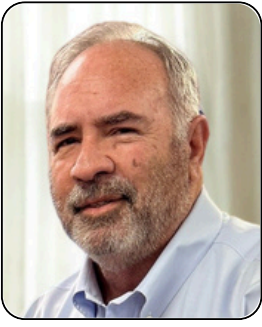
The flooding not only restricts access for more than 20 nearby homes but also halts operations at the quarry. To address these issues, Jefferson County and New Frontier Materials plan to raise and realign that 800-foot portion of Sulphur Springs Road.

The project will elevate the roadway out of the 100-year floodplain, shift it slightly out of the Glaize Creek stream buffer zone, and widen it to two 12-foot asphalt lanes. The project is expected to go out for bid in late January 2026, with construction possibly beginning in March 2026.

For updates and additional information on [Project Tracking Plans](#), visit the [Project Plans website](#).



# WORDS FROM THE COUNTY EXECUTIVE



As we begin a new year, the County moves into a new chapter with changes in leadership on the County Council. I look forward to working alongside Tim Brown, the newly appointed Chair of the County Council, and Charles Groetke, the newly appointed Vice Chair, as well as the full Council. New perspectives support collaboration and help maintain progress across our initiatives as we continue moving Jefferson County forward together.

Each February, the State of the County Address serves as a moment to look back at the work accomplished over the past year and to share what lies ahead. It gives us the chance to pause, assess our progress, and focus on the priorities that will guide the months to come. As this marks my final year serving as County Executive, I am especially mindful of how quickly time passes and how each quarter presents opportunities to advance important work before responsibility is handed to the next County Executive. I remain proud of what has been accomplished and confident that the groundwork is in place for continued progress.

I would also like to extend my sincere appreciation to Northwest High School for their continued hospitality in hosting the State of the County Address. Their support helps foster productive discussion and community engagement around our shared goals.

Looking ahead to the first quarter of 2026, I am optimistic about the direction of Jefferson County. This year presents opportunities for continued growth, thoughtful transition, and positive momentum, and I look forward to sharing updates on our progress in the months ahead.

Warm Regards,

Dennis J Gannon  
County Executive

**Jefferson County Growth Association**  
cordially invites you to the

## STATE OF THE COUNTY *Jefferson County Plans for 2026*

*Each year the JCGA welcomes hundreds of individuals to the Annual State of the County who work, live and support Jefferson County, Missouri*



**Dennis Gannon**  
Jefferson County  
Missouri Executive

### Guest Speakers

Northwest R-1 School District Asst. Superintendent Secondary, Dr. Doréan Dow  
Northwest R-1 School District Asst. Superintendent Elementary, Dr. Grace Green  
Jefferson County Growth Association President, Dan Govero  
Jefferson County Missouri Executive, Dennis Gannon

**Register & Pay by February 10, 2026**

Online: [www.jcgame.org](http://www.jcgame.org)

Mail: Jefferson County Growth Association  
P.O. Box 683 | Herculaneum, MO 63048



The State of the County is an annual event streamed live, giving community members a convenient way to join from the comfort of home. This virtual format allows everyone to stay informed, connected, and engaged, regardless of schedule or location.

To watch the live stream, follow the Jefferson County Growth Association on Facebook or visit their website for the streaming link and event details.

Whether watching from home, work, or on the go, this live broadcast makes it easy to be part of this important annual gathering.



# Parks & Recreation

## JEFFERSON COUNTY

REGISTER FOR EVENTS:  
[JEFFCOMO.ORG/PARKS](http://JEFFCOMO.ORG/PARKS)

PHONE NUMBER:  
636-797-5334

CANCELLATION/  
INFORMATION HOTLINE:  
636-797-6101

[FOLLOW US ON  
FACEBOOK](#)



## 2026 Year at a glance



### WINTER VOLLEYBALL & BASKETBALL CAMPS:

Enrollment Closed  
Enrollment Closes: January 7  
Instruct 4 Saturdays - January 10 through 31

\$45.00

### KIDS FISHING DERBY:

Enrollment Opens: March 30  
Enrollment Closes: May 14  
Derby: May 16



\$5.00



### YOUTH SPRING SOCCER:

Enrollment Opens: January 02  
Enrollment Closes: March 15  
Play 8 Saturdays - March 28 through May 16

\$65.00

### YOUTH FALL SOCCER:

Enrollment Opens: June 1  
Enrollment Closes: August 23  
Play 8 Saturdays -  
September 12 through October 31



\$65.00



### TBALL & COACH PITCH BASEBALL:

Enrollment Opens: February 02  
Enrollment Closes: April 20  
Play 7 Wednesday nights - May 6 through June 24

\$65.00

### FALL VOLLEYBALL & BASKETBALL CAMPS:

Enrollment Opens: September 1  
Enrollment Closes: November 12  
Instruct 4 Saturdays - Nov 14, Nov 21, Dec 5, Dec 12



\$45.00



### JR. GOLF:

Enrollment Opens: March 30  
Enrollment Closes: June 14  
Choose 3 of 5 Tournaments on Mondays between  
June 29 through July 27

\$80.00

### BIG RIVER RUN:

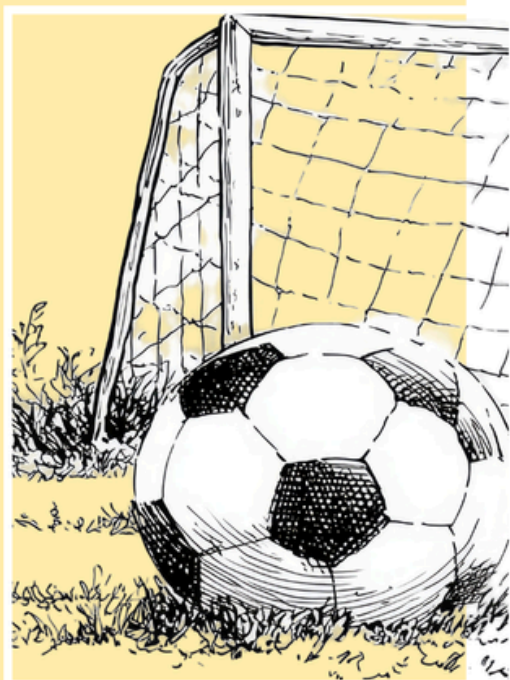
Early Bird Enrollment: June 1  
Price increases: August 31  
Last day to guarantee a race shirt: August 24  
Race Day: September 20



\$25-40

[www.jeffcomo.org/parks](http://www.jeffcomo.org/parks) [parks@jeffcomo.org](mailto:parks@jeffcomo.org) 636-797-5334

*The more fun you're having, the harder we're working!*



# Festus - Youth Soccer

**Saturdays: 3 practices/ 5 games**

March 28<sup>th</sup> - May 16<sup>th</sup>, 2026

**Location:**

Baptist Park -  
3627 Baptist Park Rd, Festus

**Grades:**

Pre k - 6th grade

# Northwest - Youth Soccer

**Saturdays: 3 practices/ 5 games**

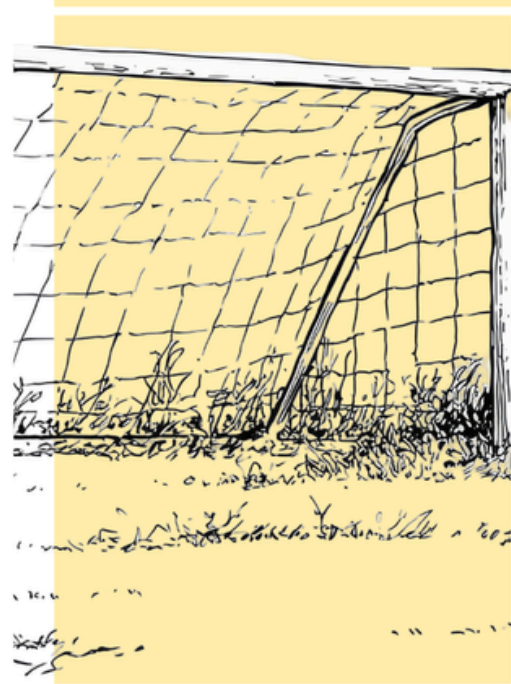
March 28<sup>th</sup> - May 16<sup>th</sup>, 2026

**Location:**

Northwest Sports Complex -  
4900 Byrnesville Rd, House Springs

**Grades:**

Pre k - 6th grade



**Registration Deadline:**

March 15, 2026

**Coed Program fee: \$65**



**Parks &  
Recreation**  
JEFFERSON COUNTY

☎ 636-797-5334

✉ [parks@jeffcomo.org](mailto:parks@jeffcomo.org)

📍 [www.jeffcomo.org](http://www.jeffcomo.org)



## COUNTY COUNCIL CORNER



I was inspired to run for County Council because I love Jefferson County and wanted the opportunity to serve my neighbors. I felt that our county has been falling behind surrounding communities, and I wanted to be a voice that helps move us forward while still preserving what makes Jefferson County unique.

While going door to door during my campaign, it became very clear that many residents are not fully aware of what the County Council does, which showed me how important communication and engagement really are.

Right now, my top priority is making sure Jefferson County does not fall any further behind our neighbors. One of the biggest challenges facing both the county and my district is managing growth in a way that allows progress while addressing growing pains responsibly. In a growing county like ours, balancing the needs of suburban neighborhoods, where residents value well-kept subdivisions and strong nuisance enforcement, with the priorities of rural areas that prefer less government involvement will always be a challenge.

I am especially proud to support efforts to bring a new recreation center to High Ridge, along with other park improvement projects throughout the county. I believe the best way for residents to ensure their voices are heard is by calling or emailing their councilperson directly. I also encourage residents to attend meetings and get involved by volunteering on local boards, such as school boards or fire boards.

Staying connected with my constituents is important to me, and calling me is the easiest way to reach me. Residents should also watch for council meetings that will be scheduled in the future. By the end of my term, one major goal I hope to accomplish is creating a handicap-accessible playground like Kade's Playground in District 2.

What I love most about living in Jefferson County is the freedom we have compared to other areas, along with the people who share strong conservative values and a belief in personal freedom and respect for one another.

**Billy Crow**

**District 2**

**636-331-4732**

**[bcrow@jeffcomo.org](mailto:bcrow@jeffcomo.org)**

## We're Hiring!

Civil Engineer (**County Services and Code Enforcement**)

Human Resources Assistant Manager (**Human Resources**)

Deputy Juvenile Officer (**Juvenile**)

Construction Inspector (**Public Works**)



***Great benefits. Career growth. Close to home.***

**APPLY AT [JEFFCOMO.GOV/HUMANRESOURCES](https://jeffcomo.gov/humanresources)**

## Warming Centers in Jefferson County, Missouri

NAME	ADDRESS	PHONE	HOURS
Jefferson County Health Department - Arnold	1818 Lonedell Road Arnold, MO 63010	636-282-1010	Mon – Thu: 8:00 to 5:30
Jefferson County Library - Arnold	1701 Missouri State Road Arnold, MO 63010	636-296-2204	Mon - Thu: 9:00 - 8:00 Fri/Sat: 9:00 - 5:00
Jefferson County Library - Windsor	7479 Metropolitan Blvd Barnhart, MO 63012	636-461-1914	Mon - Thu: 9:00 - 8:00 Fri/Sat: 9:00 - 5:00
Jefferson County Library - Cedar Hill	6780 Mall Drive Cedar Hill, MO 63016	636-551-1020	Mon - Thu: 9:00 - 8:00 Fri/Sat: 9:00 - 5:00
Crystal City Public Library	736 Mississippi Avenue Crystal City, MO 63016	636-937-7166	Mon - Thu: 10:00 - 7:00 Fri: 10:00 - 5:00 Sat: 9:00 - 1:00
De Soto Public Library	712 South Main Street De Soto, MO 63020	636-586-3858	Mon/Wed: 9:00 - 6:00 Tue/Thu/Fri: 9:00 – 5:00 Sat: 9:00 - 1:00
Aging Ahead De Soto Senior Center	221 South 3rd Street De Soto, MO 63020	800-243-6060	Mon - Fri: 9:00 - 2:00
St. Andrews United Methodist Church	1004 Rock Road De Soto, MO 63020	636-586-2472	Mon - Thu: 9:00 - 2:00
Festus Public Library	400 West Main Street Festus, MO 63028	636-937-2017	Mon - Thu: 9:00 - 7:00 Fri: 9:00 - 5:00 Sat: 9:00 - 2:00
Jefferson County Health Department - Hillsboro	1515 Peach Tree Plaza Ct Hillsboro, MO 63050	636-797-3737	Mon - Fri: 8:00 - 5:30
Jefferson County Library - Northwest	5680 State Road PP High Ridge, MO 63049	636-677-8186	Mon - Th: 9:00 - 8:00 Fri/Sat: 9:00 - 5:00
Jefferson County Library - Central Office	5678 State Road PP High Ridge, MO 63049	636-677-8689	Mon - Thu: 9:00 - 8:00 Fri/Sat: 9:00 - 5:00
Aging Ahead Jefferson County	6180 Highway MM House Springs, MO 63051	636-253-0558	Mon - Fri: 9:00 - 3:00
Saline Valley Fire District Station 3	4535 Old Highway 21 Imperial, MO 63052	636-296-2445	Mon - Sun: 7:00 - 7:00

\*INFORMATION PROVIDED BY UNITED WAY 2-1-1. | Updated as of 11/04/2025



**JEFFERSON COUNTY,  
MISSOURI**

**[HTTPS://MEMBER.EVERBRIDGE.NET/INDEX/  
338104120508754](https://member.everbridge.net/index/338104120508754)**



**636-797-9797  
EXT 107**

**STAY INFORMED WITH REAL TIME ALERTS:  
SEVERE WEATHER, CRIMINAL ACTIVITIES, SEVERE TRAFFIC,  
MISSING PERSONS, & MORE**

