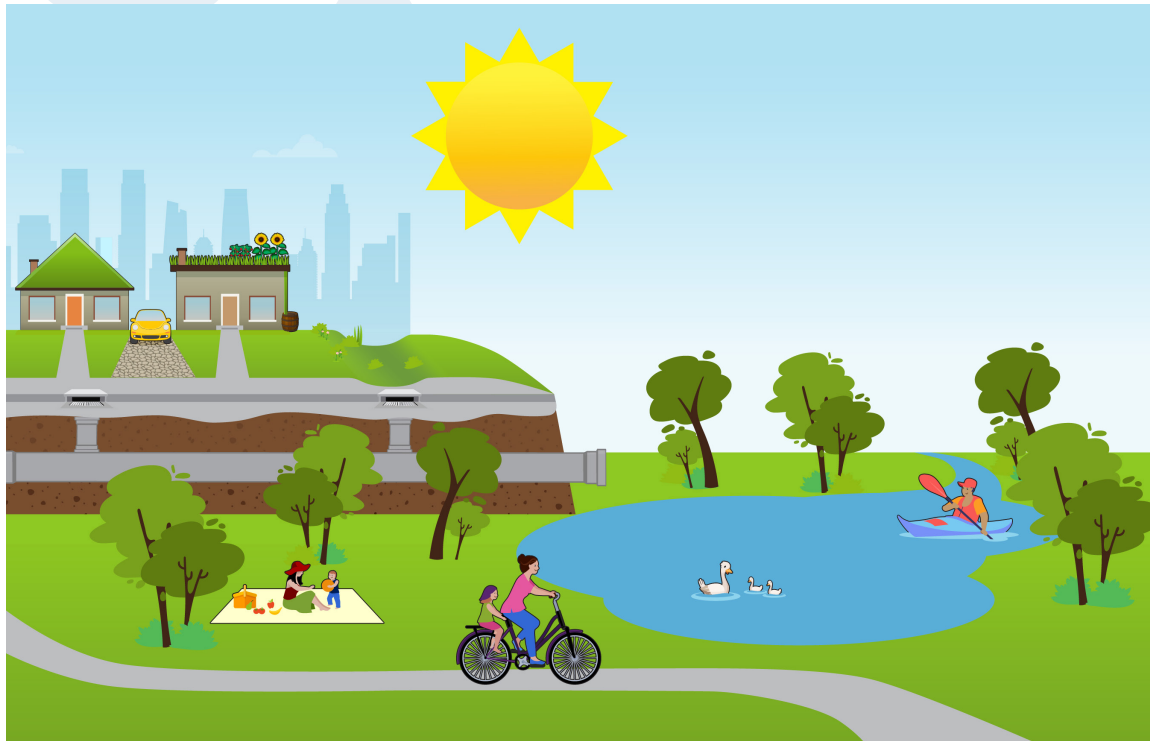


INNOVATIVE SOLUTIONS BENEFIT THE COMMUNITY

As storm sewer systems across the country age and continue to be tested by extreme weather, many communities are investing in green infrastructure as a resilient and effective approach to managing the impact of stormwater. Green infrastructure practices such as rain

gardens, green roofs, and permeable pavements help reduce and treat stormwater where the rain falls, while providing numerous community benefits.

Innovative green infrastructure solutions are wise investments that complement more traditional sewer system components. Together they can work efficiently and effectively to manage the impact of stormwater and bring value to communities.



BE STORMWATER SMART

Know What Happens When It Rains

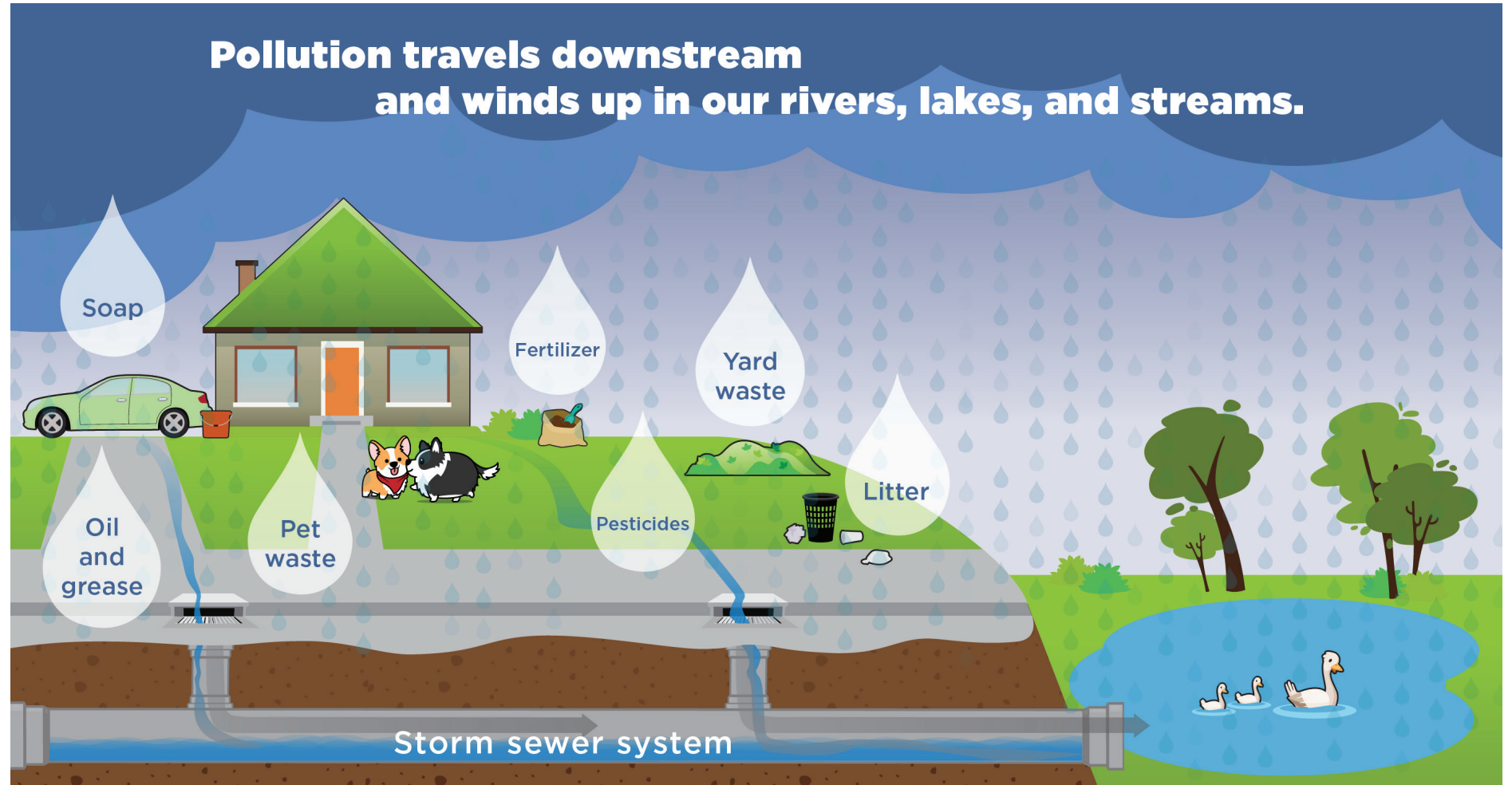
Jefferson County
Stormwater Management Division
PO Box 100/729 Maple St. 2nd fl
Hillsboro MO 63050
Phone: 636-797-6228
jeffcostormwater@jeffcomo.org

Have you ever watched water run down a gutter or pool on the side of the road during a storm? What happens to all the water? Most stormwater—the water from rain and snow—runs over the land and down a storm drain. The water flows through a network of underground pipes and open channels directly to our streams, rivers, and lakes. That's why keeping stormwater clean is vital to the health of our waterways, community, and even our economy.


KNOW WHAT'S IN THE FLOW

When water flows off our property after a storm, what's on our lawns, roads, buildings, and parking lots flows with it. The water that doesn't soak into the ground picks up oil, litter, fertilizer, and other unhealthy items along its way that wind up in our rivers, lakes, and streams.

Water pollution can start on your property in ways you cannot see, but that affect your health and the whole community downstream. Watching what we put in our storm drains and



on our property makes our rivers, lakes, and streams cleaner, healthier, and more enjoyable. And by investing in solutions to manage stormwater, we help make our community a safer, greener, healthier, and more enjoyable place to live.



Stormwater is the water that flows over the ground after it rains, snows, or sleets. It can become polluted as it runs over hard surfaces and flows downstream.