

Welcome!

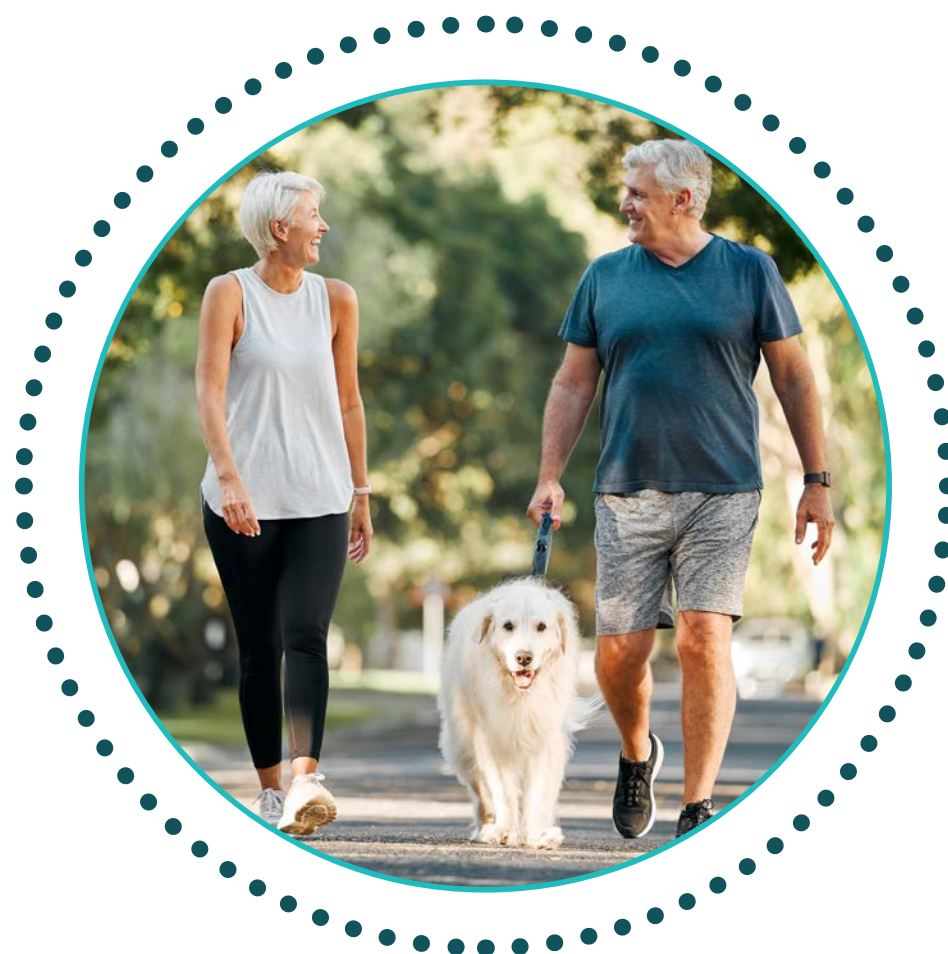
Please Sign In



WALK BIKE
JEFFERSON
COUNTY



Visit the Project Website



About the Project

- 1 Link together community assets
- 2 Create a network for walking
- 3 Create a network for biking
- 4 Prioritize projects for implementation based on a phased approach
- 5 Improve safety, comfort and accessibility
- 6 Encourage more walking and biking in Jefferson County



Pedestrian Network

Paths, sidewalks, trails, focus on destinations within a 1-mile or 20-minute walk. Important to consider where people cross the street walking or wheeling.



Bike Network

On- and off-street bike routes, and recreational biking opportunities. Protection in and through intersections to ensure cohesive network.

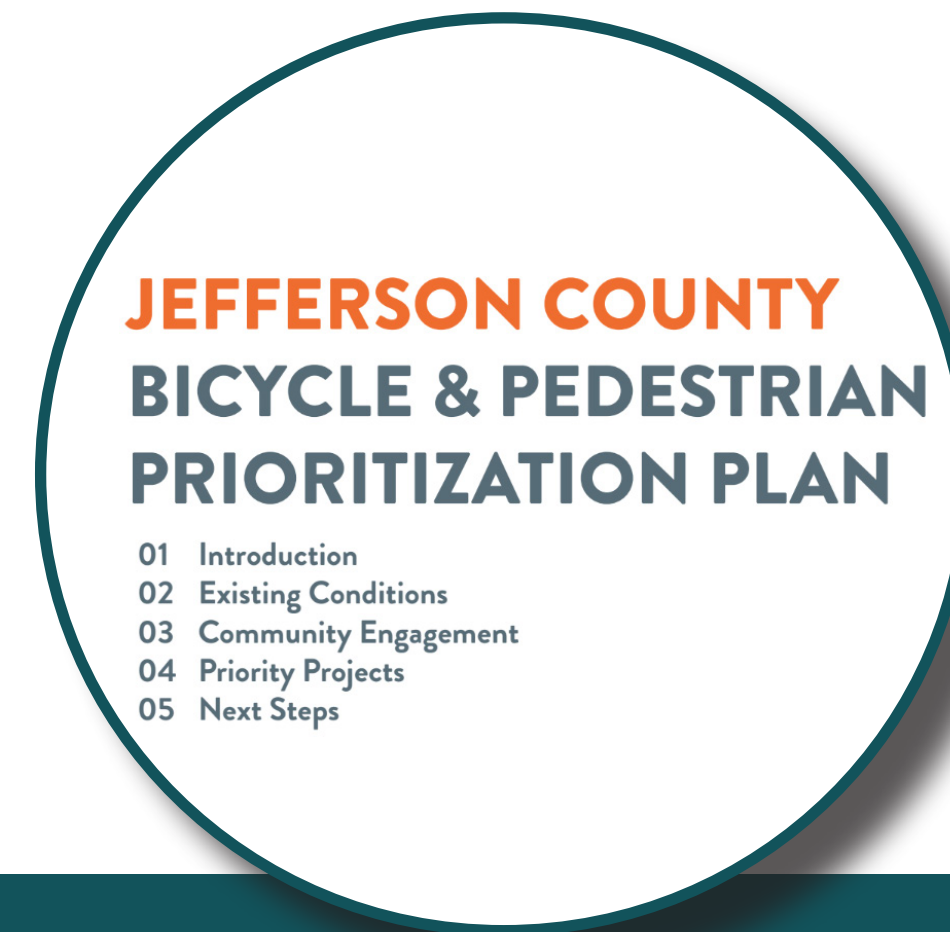


Previous Planning Efforts



Visualize Jefferson County Master Plan (2023)

Comprehensive plan for Jefferson County, still in progress. Several transportation recommendations include the need for more safe places to walk and bike.



Jefferson County Bicycle & Pedestrian Prioritization Plan (2022)

Trailnet led project to identify priority improvements pertaining to intersections, disconnected bike/pedestrian networks, and future bike/pedestrian expansion projects. Cities of Herculaneum, Festus, and Crystal City.



Jefferson County Roadway Master Plan (2022)

Identifies future short and long-term roadway needs and improvement projects.



Jefferson County Road Safety Plan (2021)

Provides strategies to address common safety issues. Includes project-specific and county-wide safety solutions.



Jefferson County Parks Master Plan (2013)

Identifies visions for northern and southern parks. Northern parks being connected via a trail system.



« PROJECT TIMELINE »

Community Engagement

Throughout Project

Public launch of community engagement effort with an initial open house in summer 2024. Complete walk & bike audits, attend community events, and host focus group meetings through fall 2024.

Draft Plan & Open House/Pop-up Demonstration

Fall 2024

Share draft plan recommendations with the public at a second open house and a pop-up demonstration. A pop-up demonstration is a temporary build, using tactical materials, to showcase potential walking and biking facilities.

Implementation

Dependent on Funding

With a formally adopted plan for walking and biking, Jefferson County staff can make informed decisions about infrastructure priorities. The plan can aid in leveraging federal funding opportunities for project support.

Existing Conditions

Complete by August 2024

Compile existing conditions information. Review relevant plans, programmed projects, and existing facilities. Analyze existing level of traffic stress and level of service for people on bike and on foot. Map important community destinations and land uses.

Network Mapping & Priority Route Scoring

May - November 2024

Identify networks for walking and biking. Using existing conditions information, and a matrix to score routes, assign route prioritization for walking and biking projects implementation. Present networks to Jefferson County & advisory team members.

Final Plan & Adoption

Early 2025

Refine plan recommendations (network & project prioritization) and deliver plan to Jefferson County staff. Assist with necessary presentations and meetings to get plan through the county adoption process.



Definitions

Bicycle Level of Traffic Stress (BLTS)

Evaluates how stressful it is to ride a bike in the presence of cars and trucks, based on factors like street width, speed limit, traffic counts, and bike lanes. LTS 1 is a very comfortable place to ride a bike, even children or elderly adults feel at ease. LTS 4 is a very uncomfortable place to ride a bike. Only commuter or professional cyclists may feel comfortable here.

Pedestrian Level of Service (LOS)

Quantifies the experience of walking or wheeling along roadways by scoring based on factors like speed limit, number of travel lanes, and sidewalks or side paths. LOS 1 is a very comfortable place to walk or wheel, where people may enjoy casual strolls because the environment is so nice. LOS 5 is a very uncomfortable place to walk or wheel where walking trips are only made out of necessity.

Functional Classification

Functional classification is a common definition in transportation planning. Roads are “functionally classified” based on how they serve motor vehicle traffic within a network. The higher classifications (interstates, arterials) move more cars with limited access points. The lower classifications (collector or local roads) move fewer cars at lower speeds, with more access points to local destinations.

Posted Speed Limit

Signs posted along the road and are enforceable by law.

Hill Grades

Roadways where hill grades are at least a 5% incline.



Example hill grade on Konert Rd

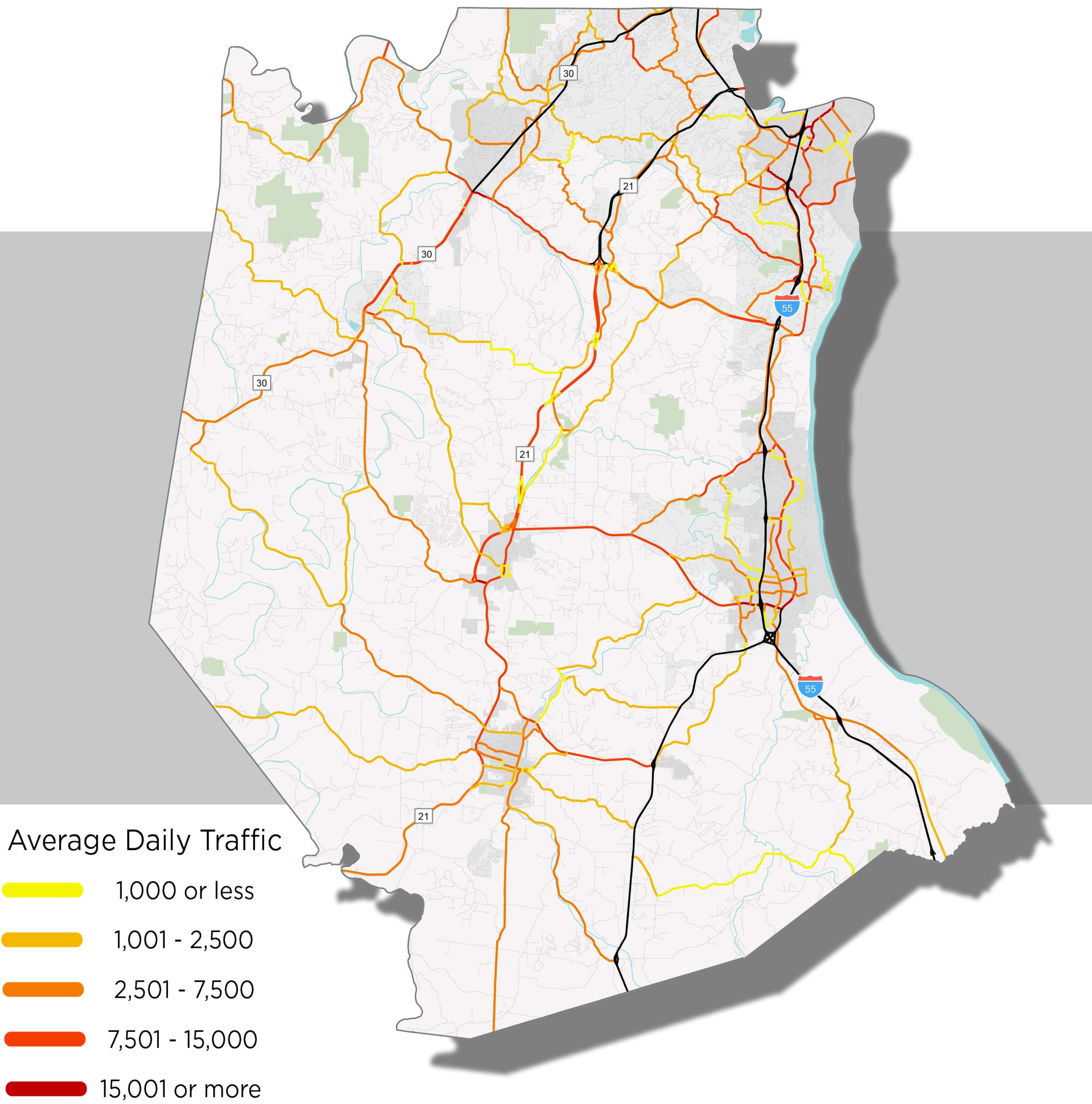
Average Daily Traffic (ADT)

The average 24-hour volume of vehicle traffic on a highway or road.

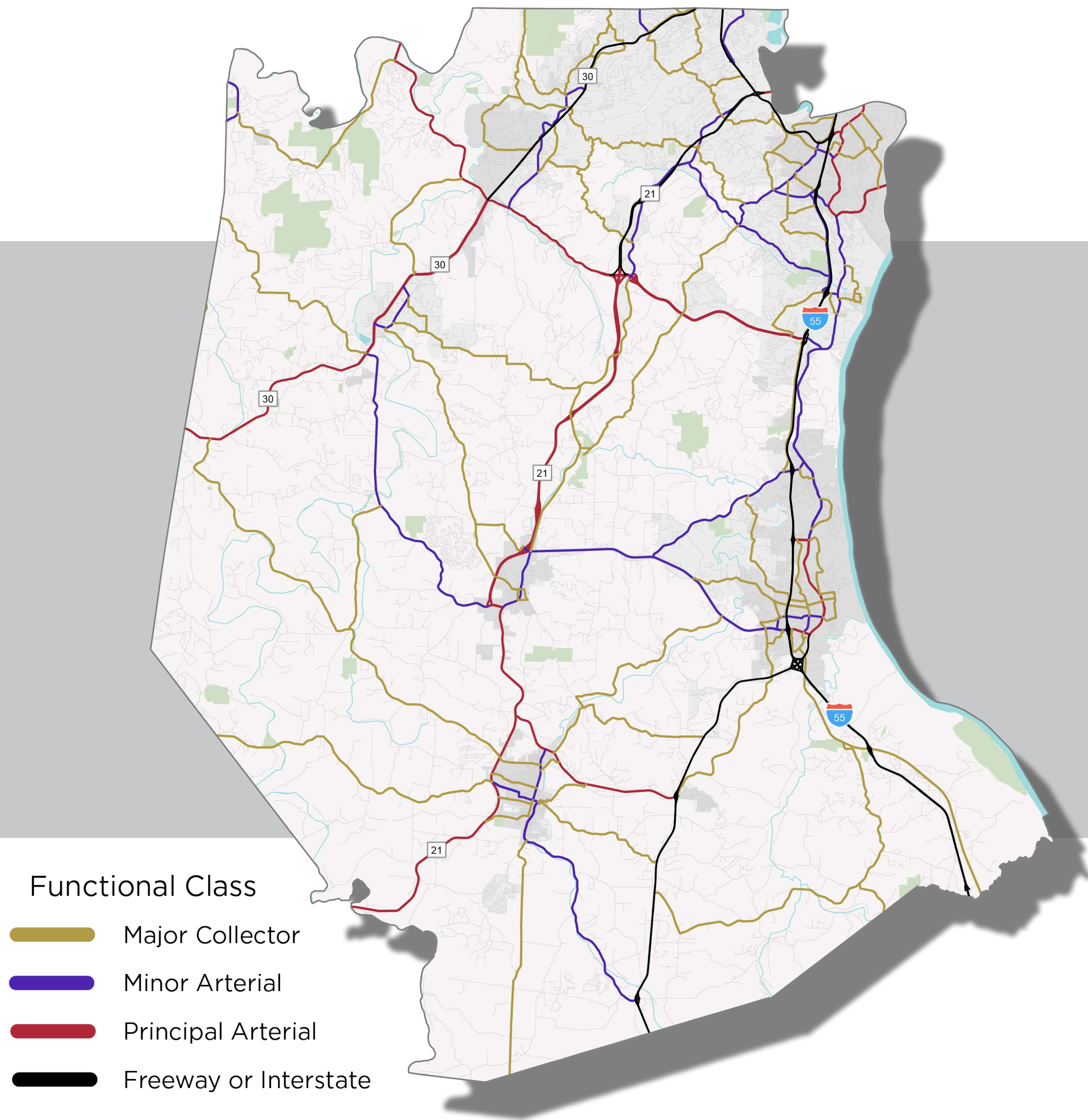


JEFFERSON COUNTY

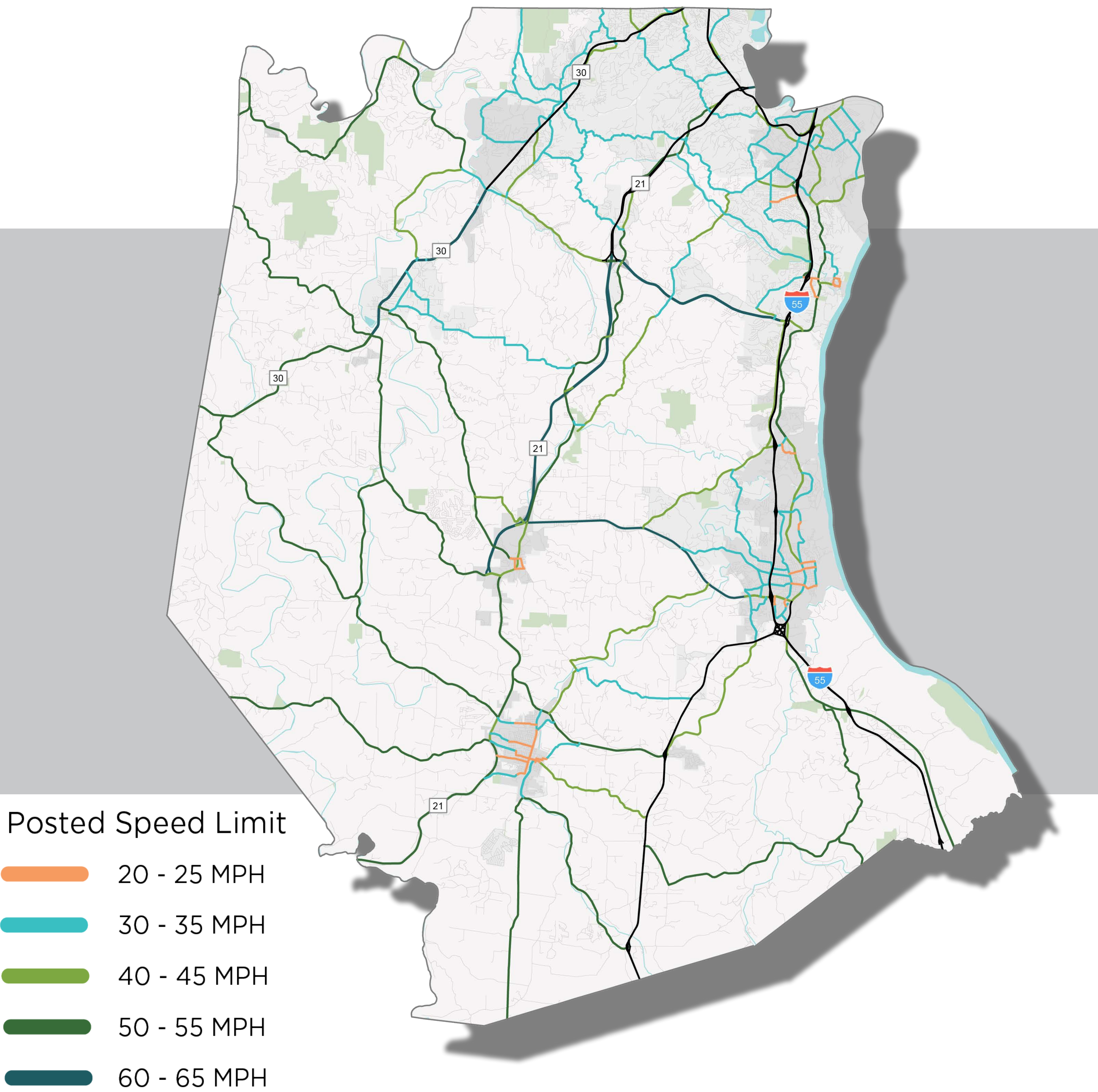
EXISTING CONDITIONS



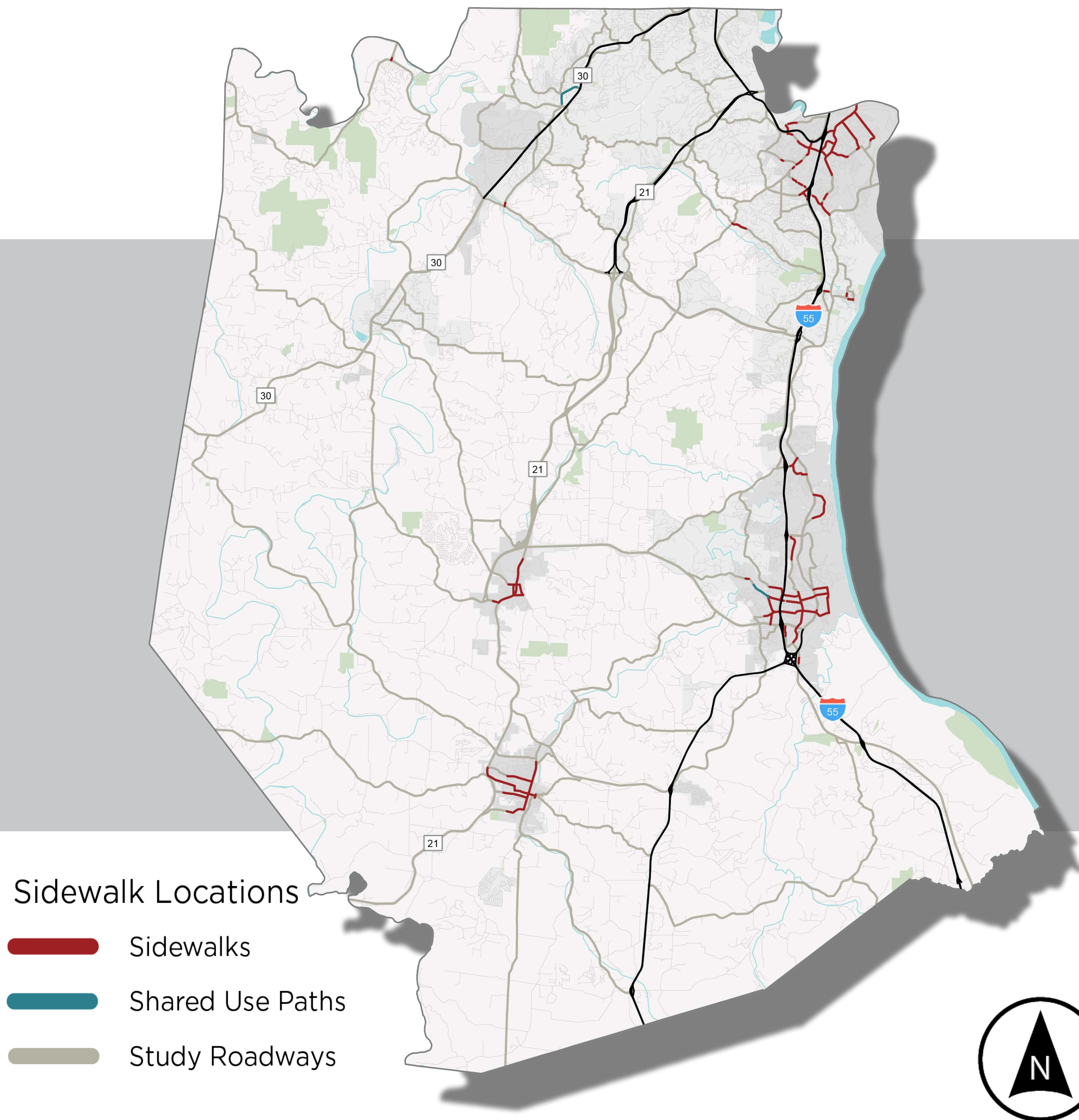
AVERAGE DAILY TRAFFIC



ROADWAY FUNCTIONAL CLASSIFICATION



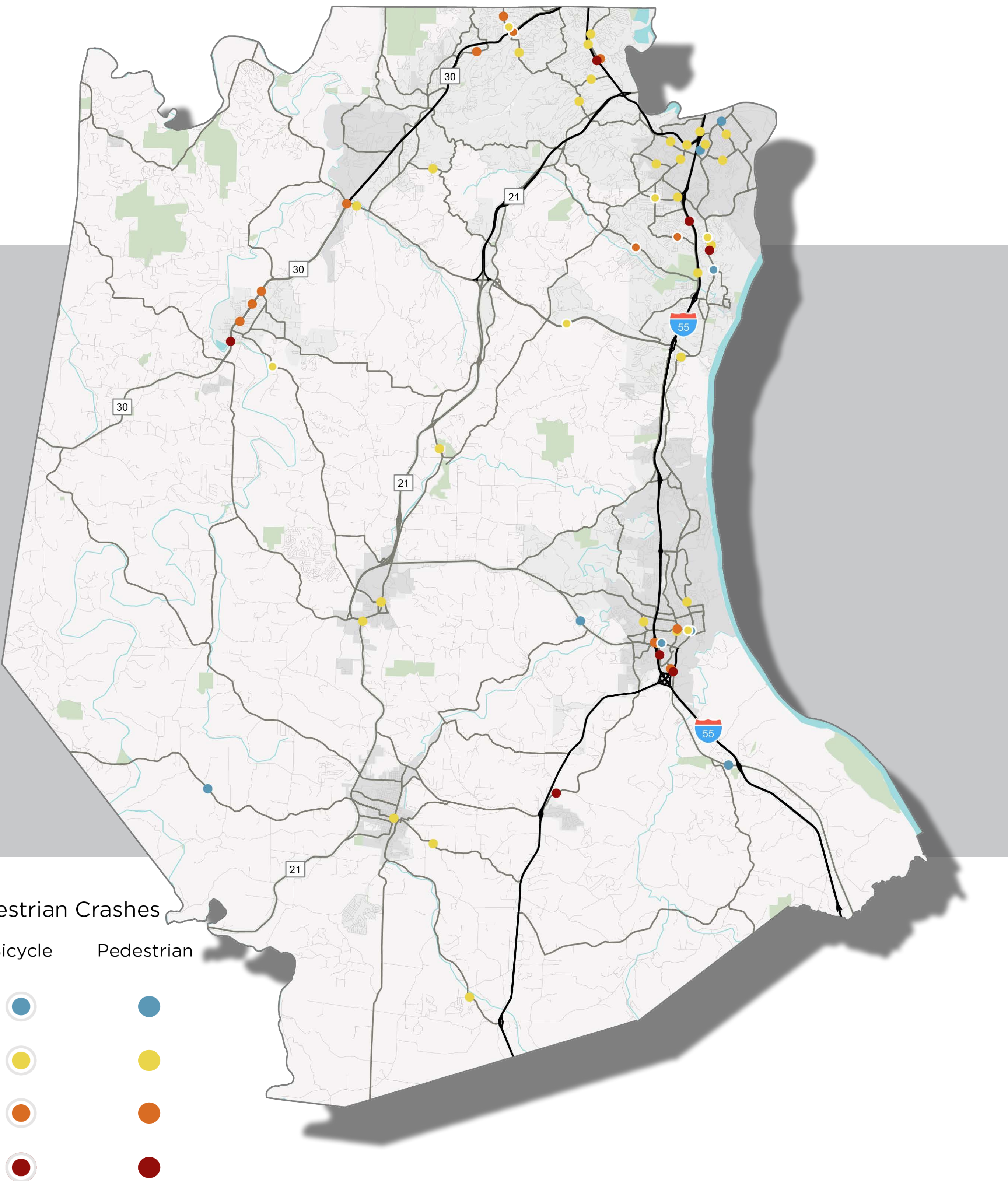
POSTED SPEEDS



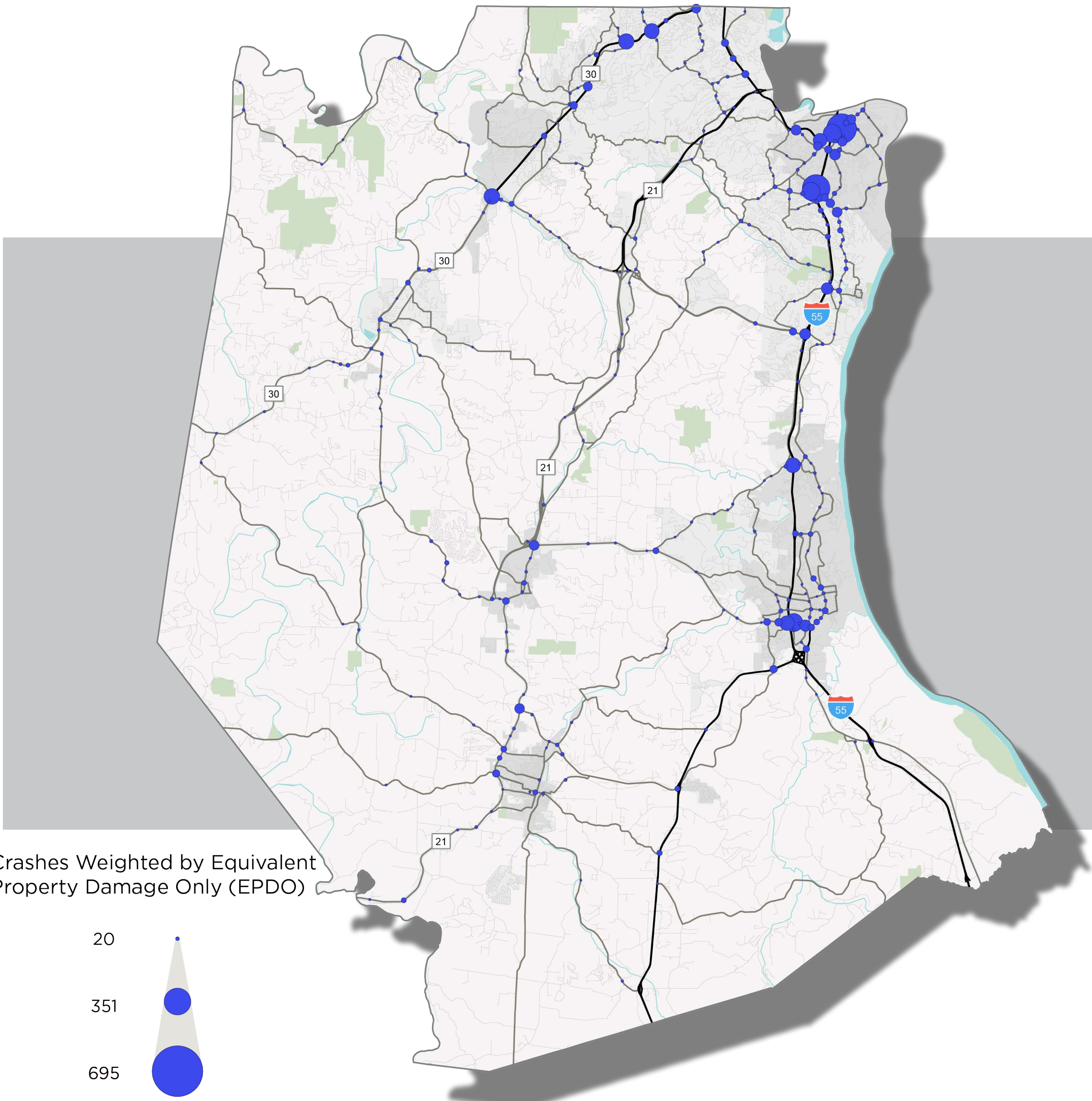
SIDEWALKS

JEFFERSON COUNTY

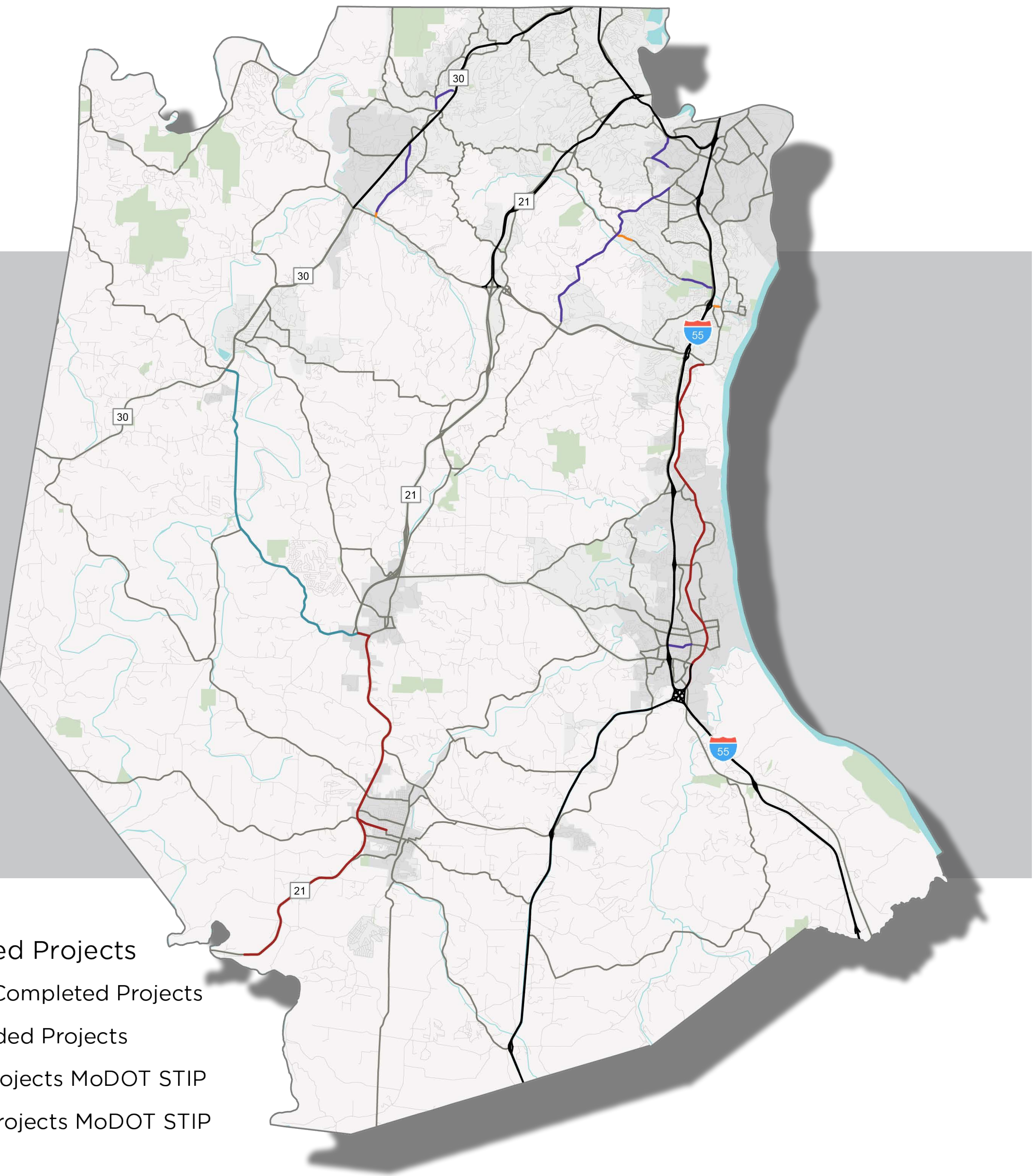
EXISTING CONDITIONS



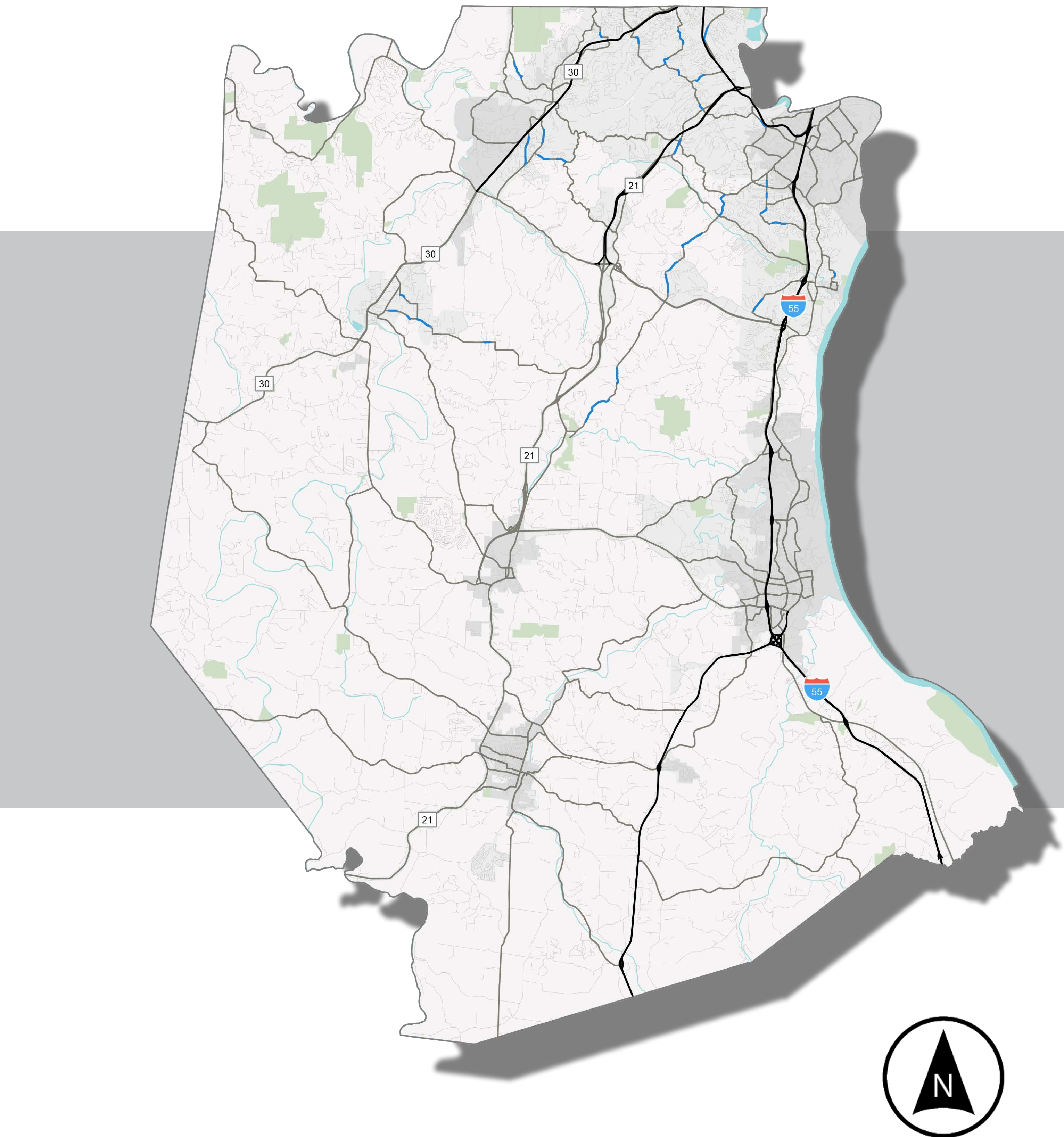
BICYCLE AND PEDESTRIAN CRASHES



CRASHES WEIGHTED BY SEVERITY



RECENT & PLANNED PROJECTS



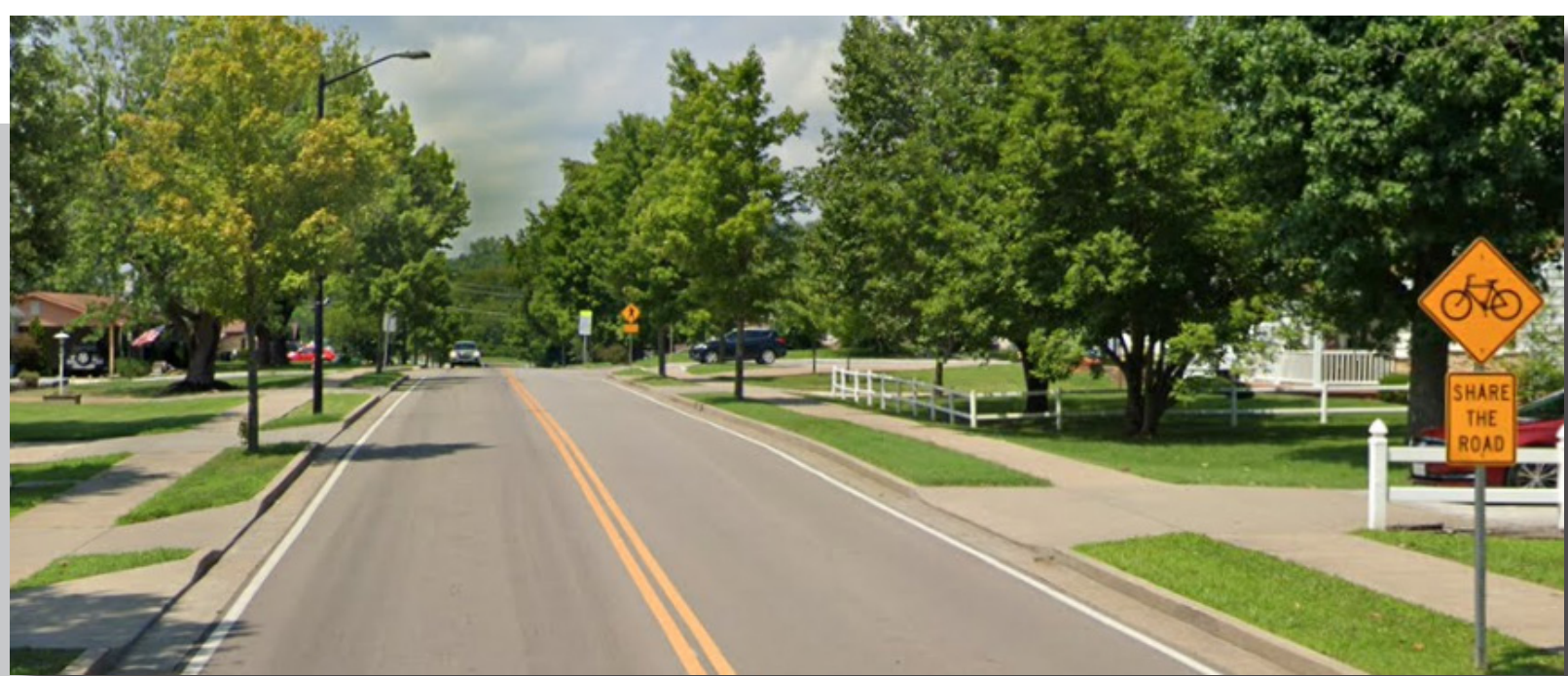
HILL GRADES

JEFFERSON COUNTY EXISTING CONDITIONS

Pedestrian Level of Service (PLOS)

Quantifies the experience of walking or wheeling along roadways by scoring based on factors like speed limit, number of travel lanes, and sidewalks or side paths. LOS 1 is a very comfortable place to walk or wheel, where people may enjoy casual strolls because the environment is so nice. LOS 5 is a very uncomfortable place to walk or wheel where walking trips are only made out of necessity.

Example LOS 1



Example LOS 3



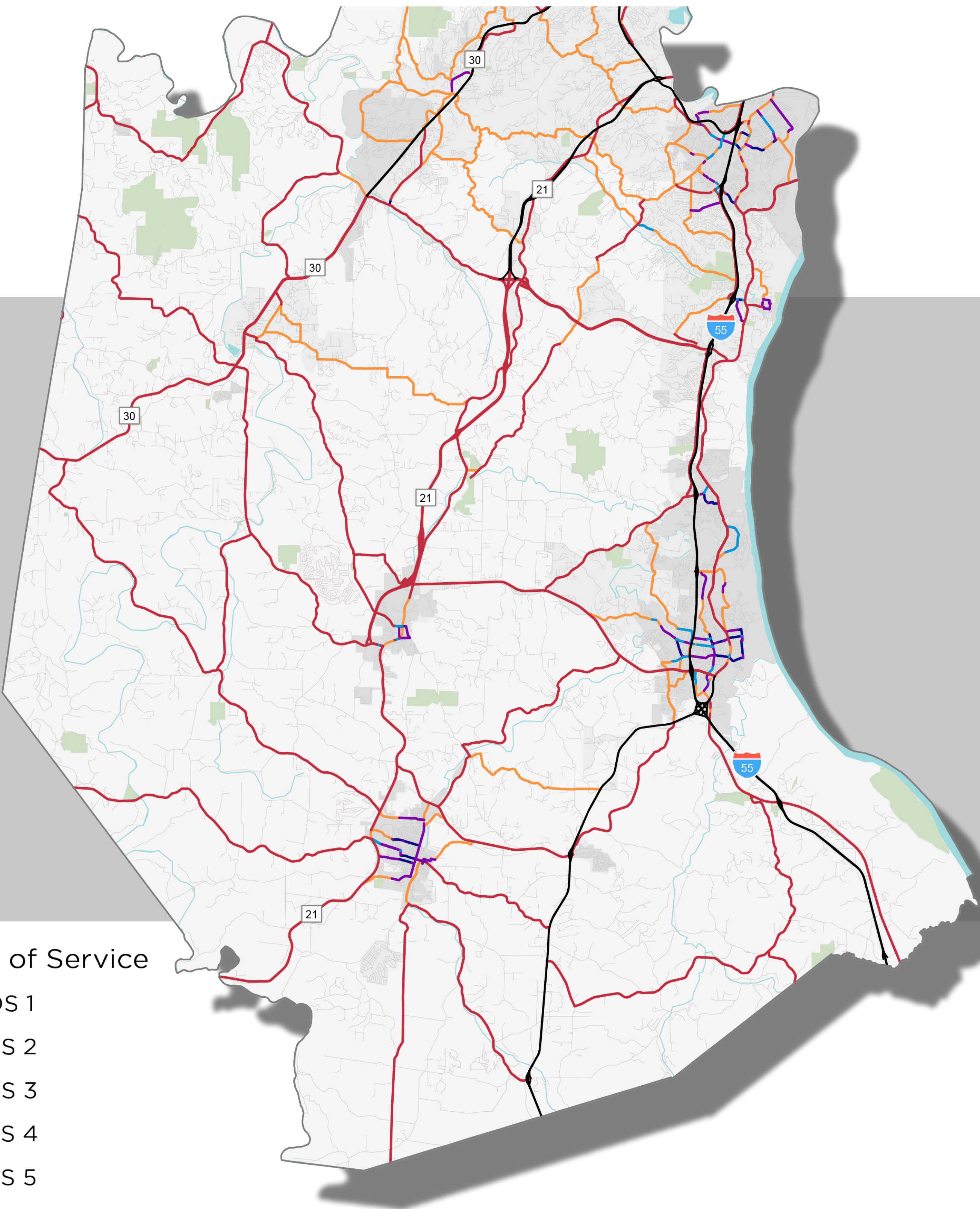
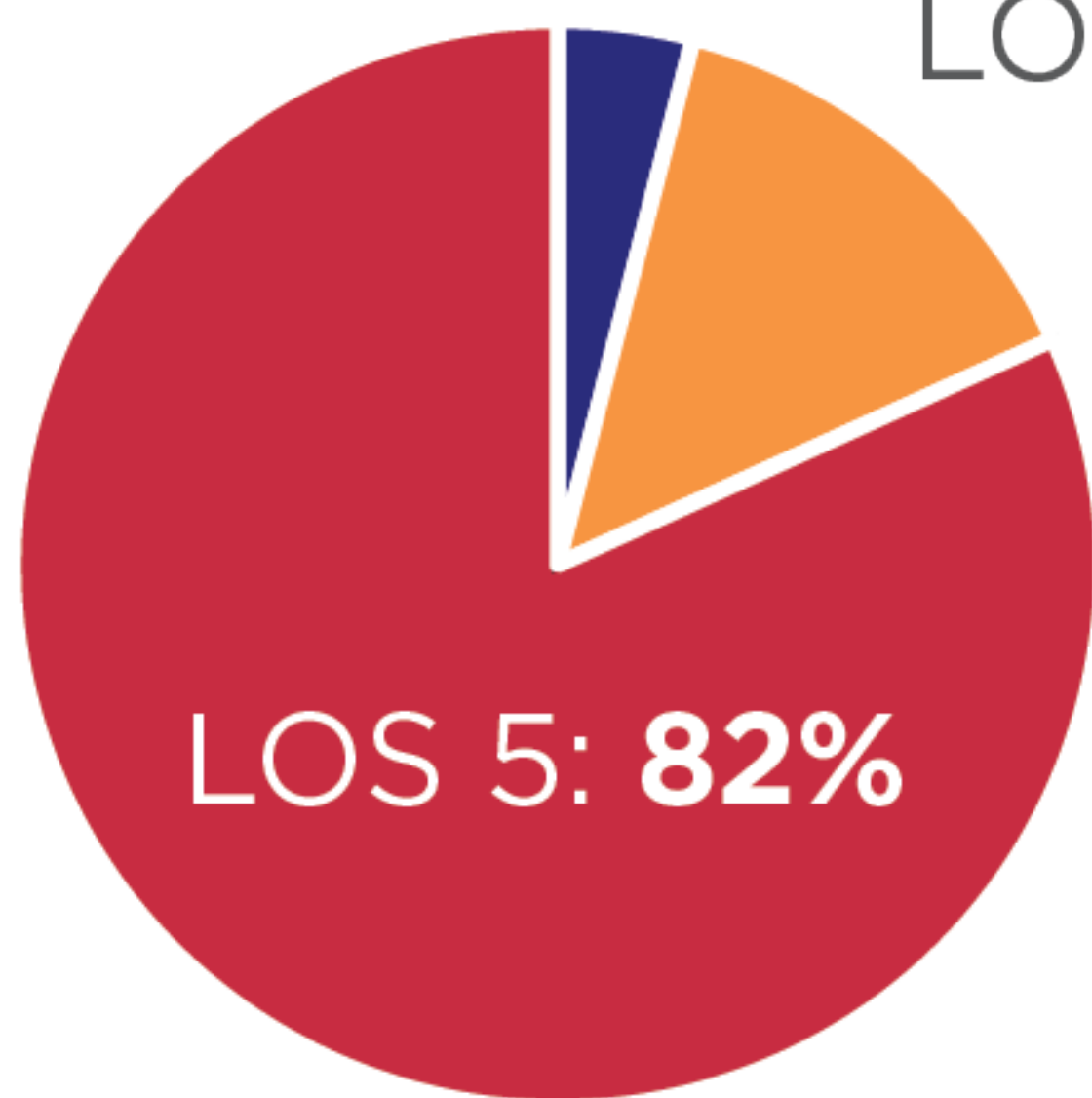
Example LOS 5



LOS 1 & 2: 4%

LOS 3 & 4: 14%

LOS 5: 82%



PEDESTRIAN LEVEL OF SERVICE

Bicycle Level of Traffic Stress (BLTS)

Evaluates how stressful it is to ride a bike in the presence of cars and trucks, based on factors like street width, speed limit, traffic counts, and bike lanes. LTS 1 is a very comfortable place to ride a bike, even children or elderly adults feel at ease. LTS 4 is a very uncomfortable place to ride a bike. Only commuter or professional cyclists may feel comfortable here.

Example LTS 1



Example LTS 2/3



Example LTS 4

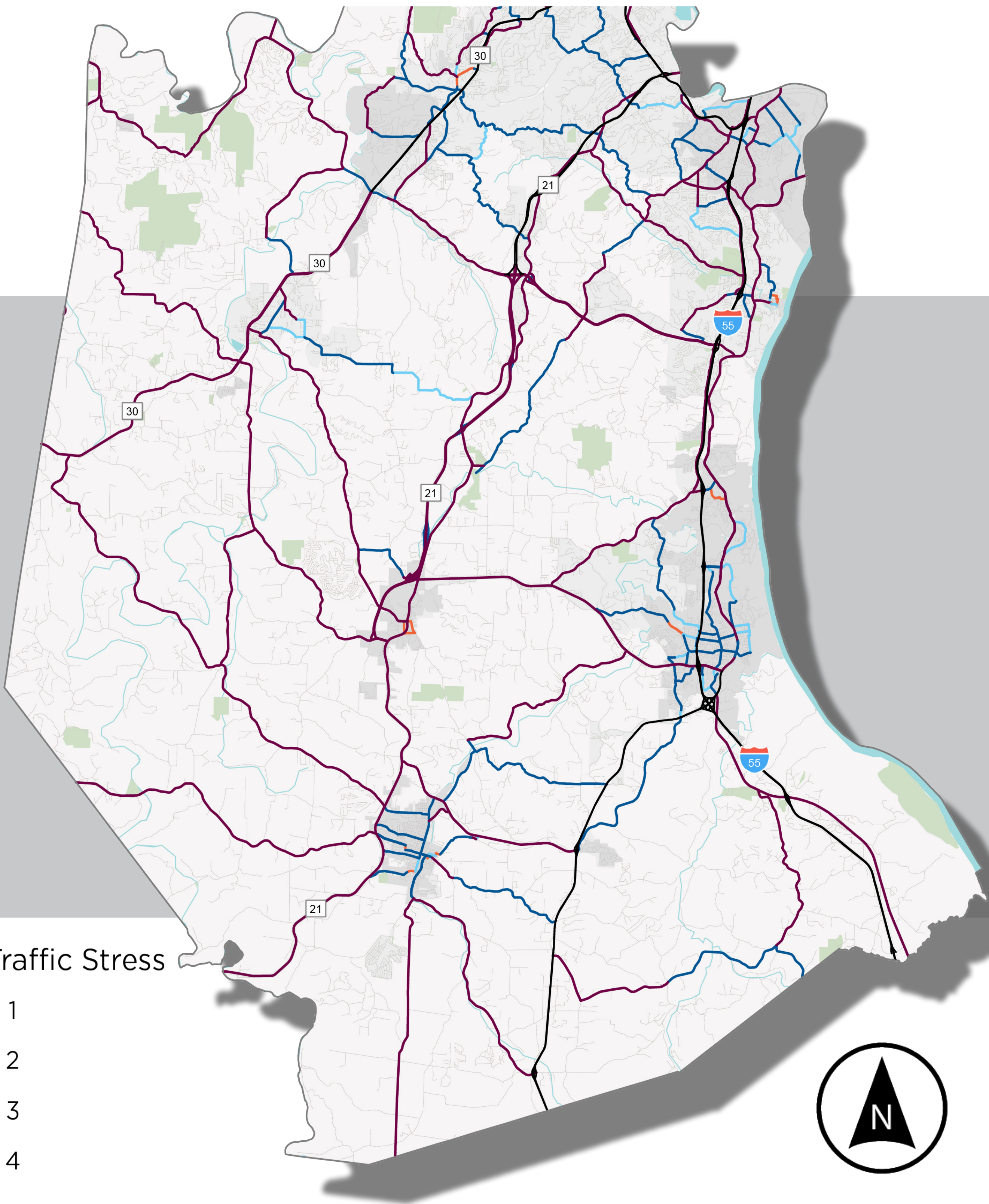
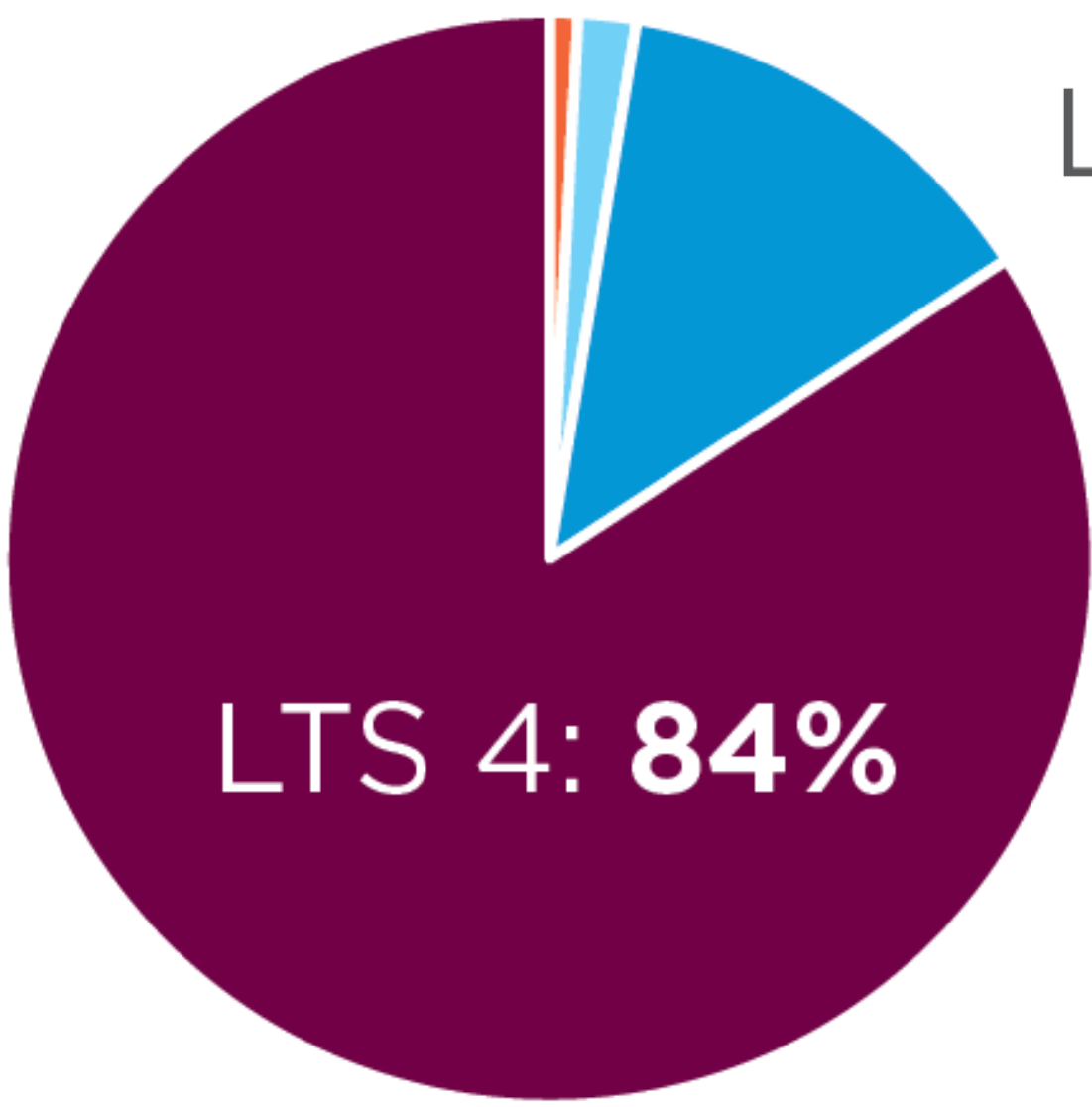


LTS 1: 0.8%

LTS 2: 1.7%

LTS 3: 13%

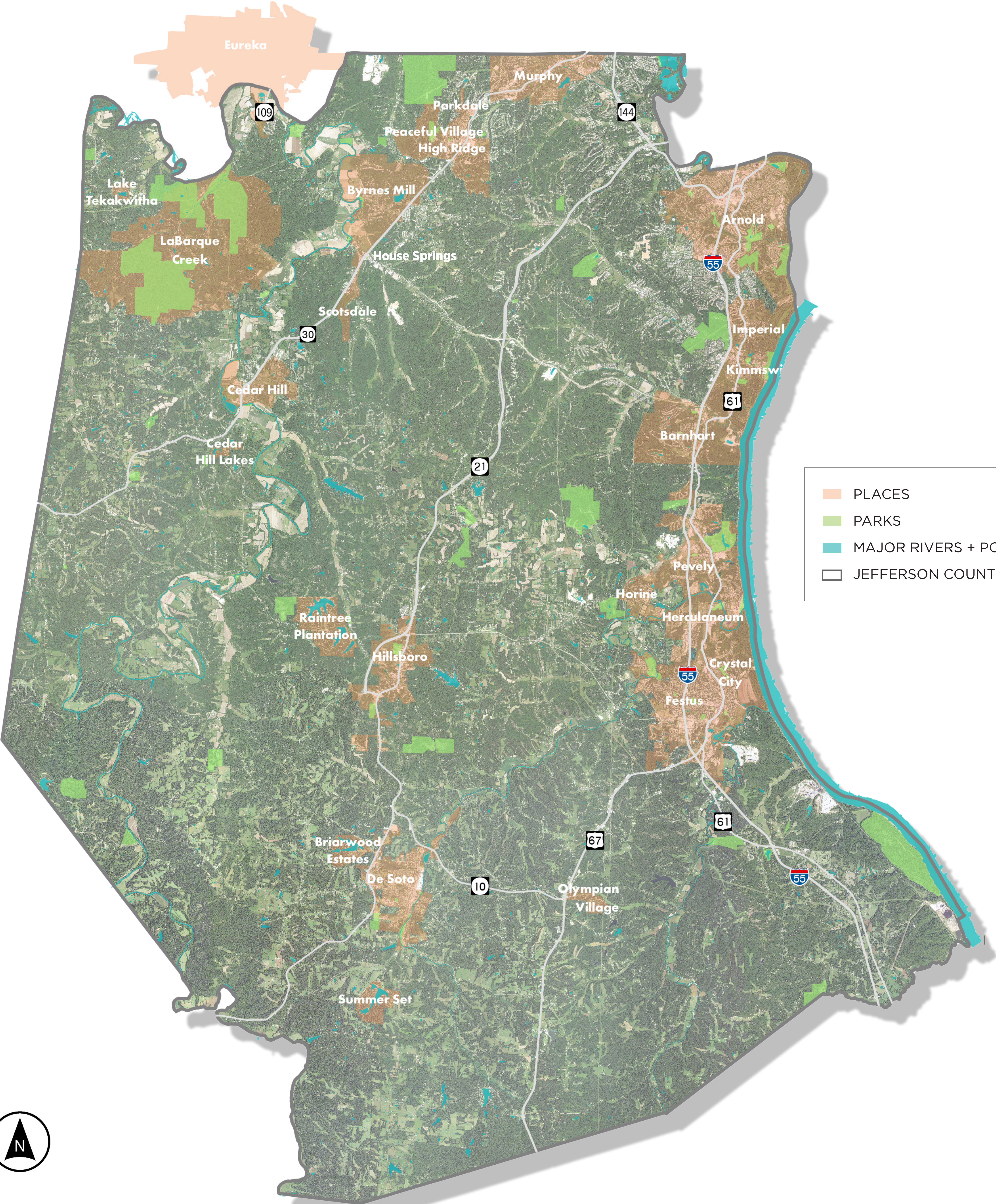
LTS 4: 84%



BICYCLE LEVEL OF TRAFFIC STRESS

JEFFERSON COUNTY

AERIAL MAP



JEFFERSON COUNTY

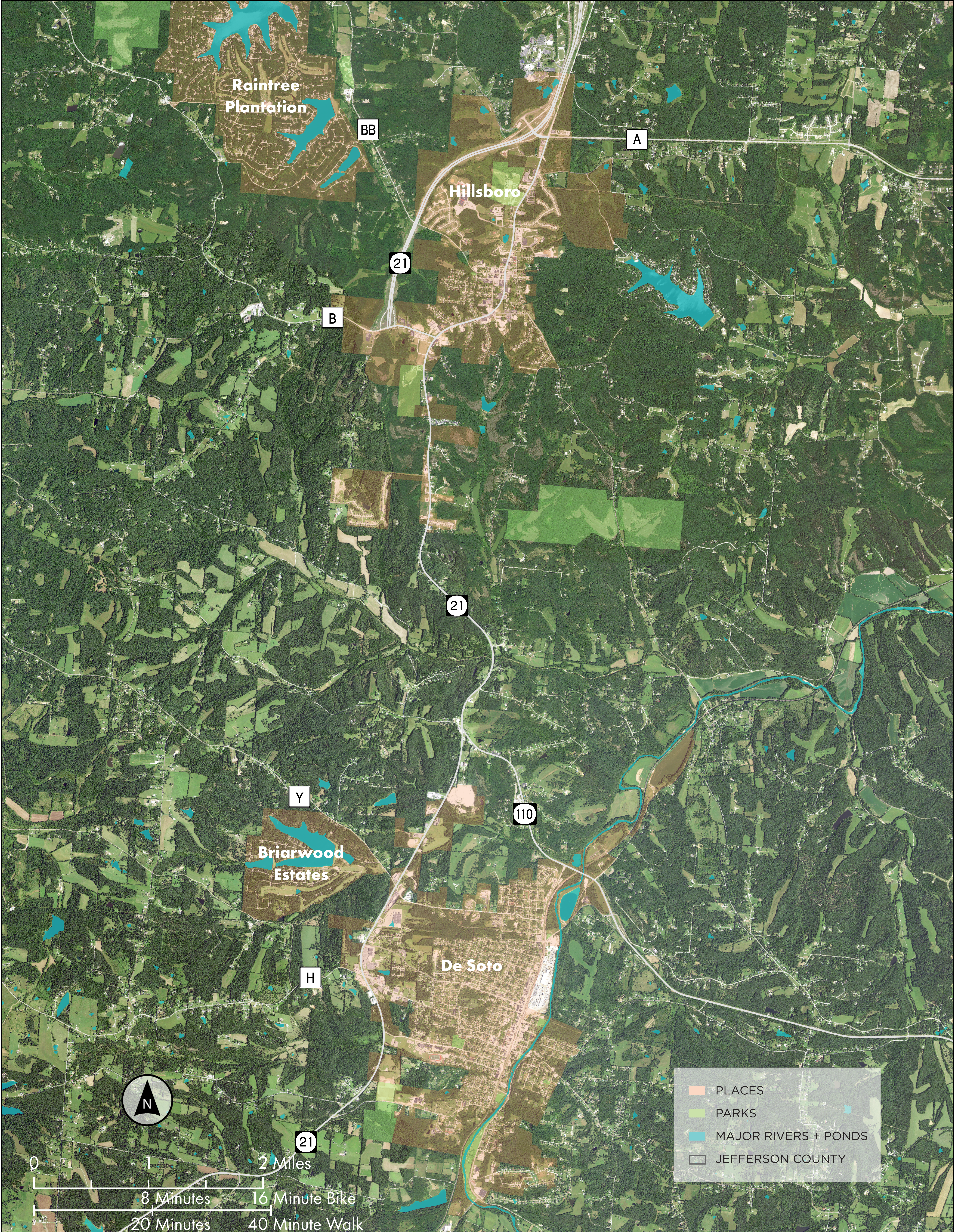
I-55 Corridor North



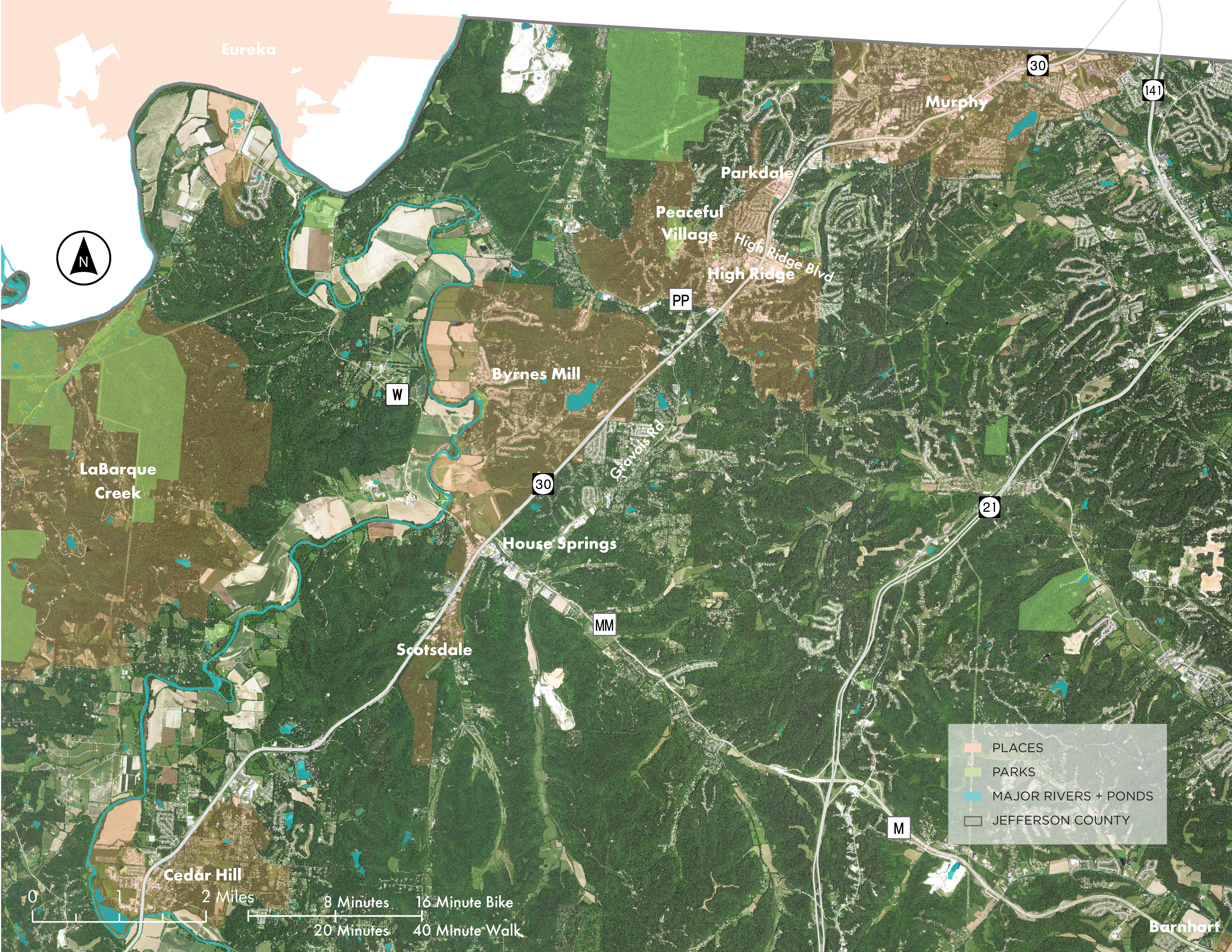
Festus & Herculaneum



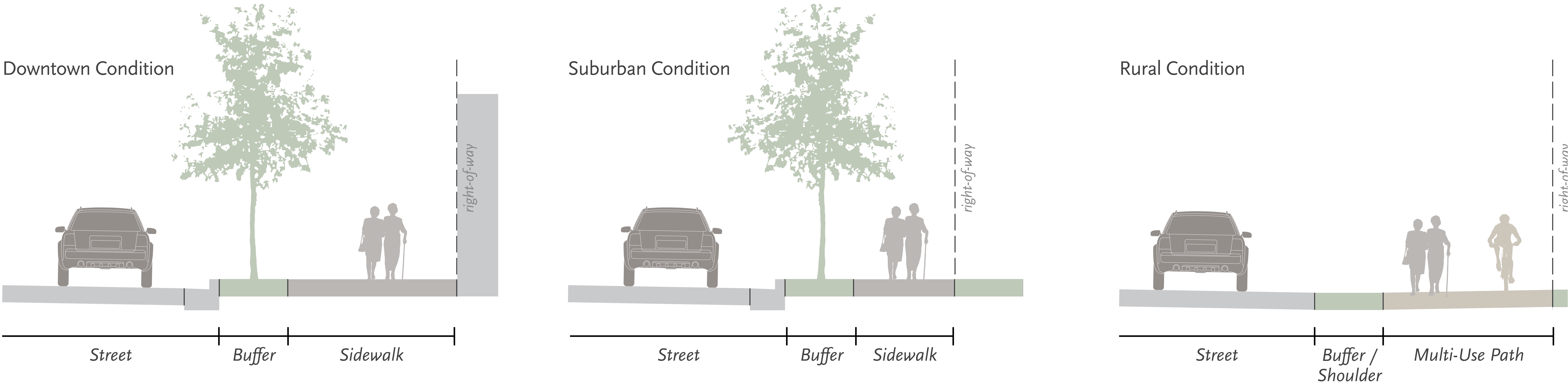
Hillsboro & De Soto



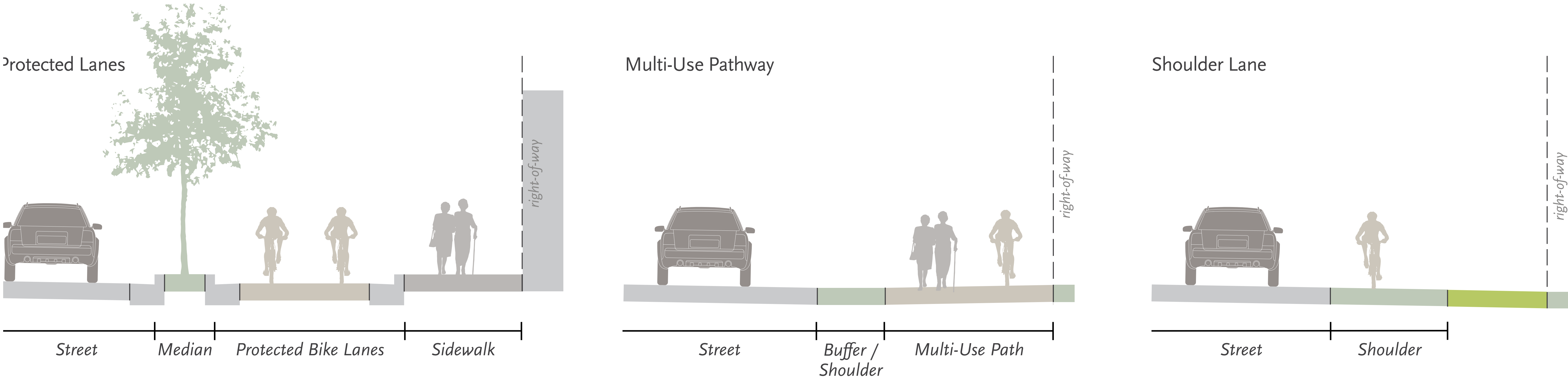
High Ridge, House Springs & Cedar Hill



Example Walking Sections



Example Biking Sections



Thank you for attending!



Visit the project website to stay tuned for upcoming engagement opportunities and to complete the online survey.



We look forward to seeing you at the fall open house, and we'll see you around at the Jefferson County Fair and Pevely Days this summer!

