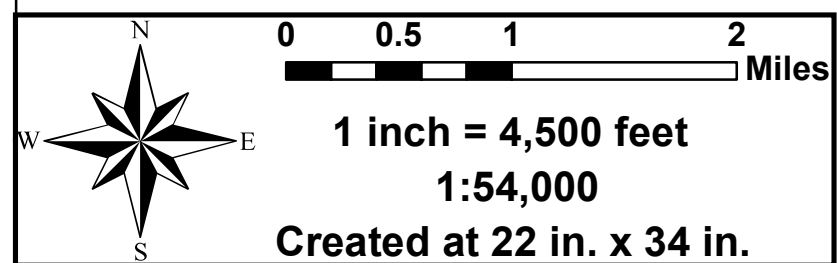
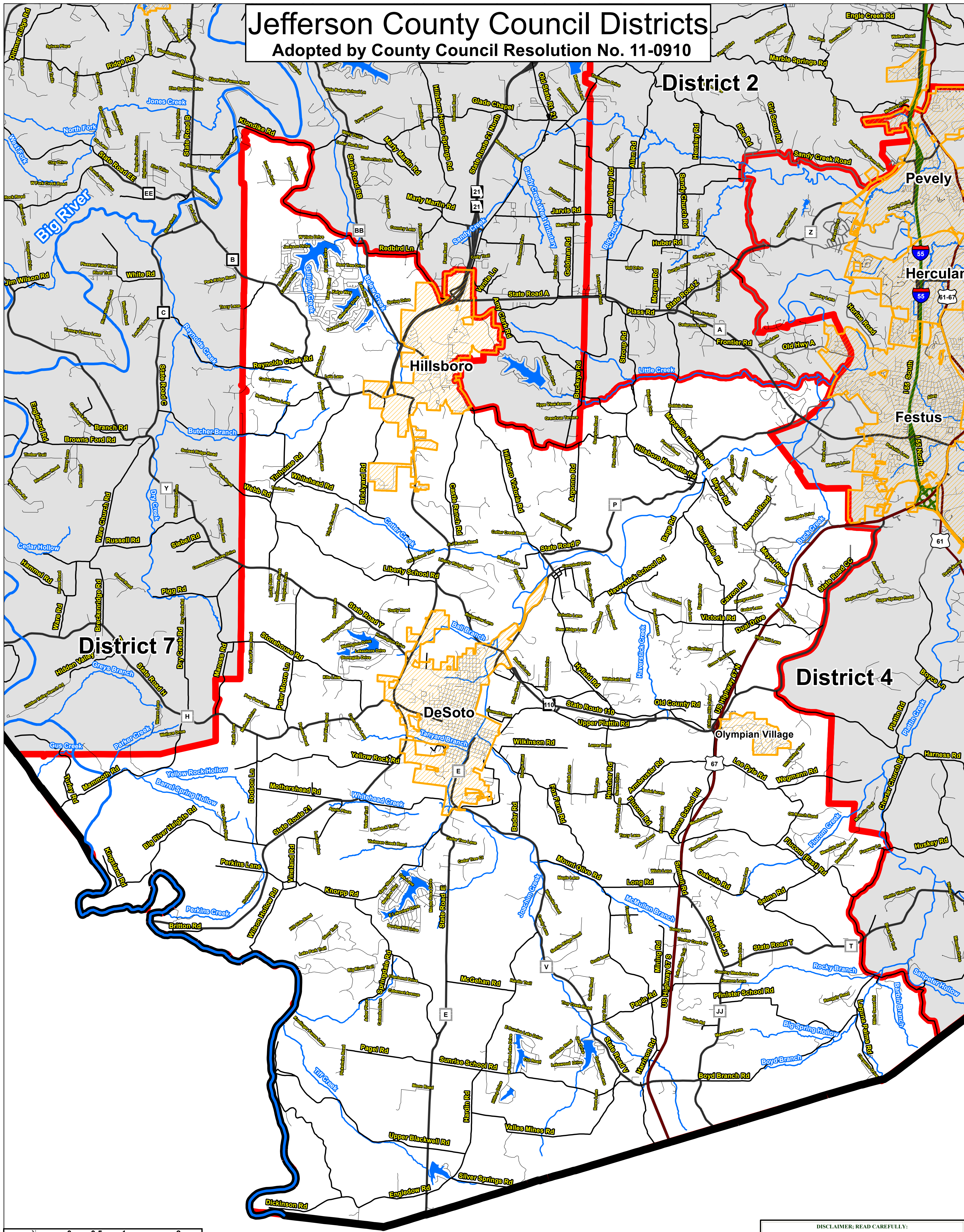


Jefferson County Council Districts

Adopted by County Council Resolution No. 11-0910



Data Sources: US Census, Jefferson County Charter Commission, Jefferson County Planning Division, Jefferson County Public Works Department, Jefferson County Assessors Office

DISCLAIMER; READ CAREFULLY:
Map files are frequently changed to reflect changes in boundaries, lot lines and other geographical features resulting from changes in ownership, development, and other causes. The existence, dimension, and location of features, as well as other information, should not be relied upon for any purpose without actual field verification. The County of Jefferson makes no warranty of any kind concerning the completeness or accuracy of information contained on this map and assumes no liability or responsibility for the use or reuse of this map by persons not affiliated with the County of Jefferson. Use of this map by any person not affiliated with the County of Jefferson constitutes agreement by the user to assume full liability and responsibility for the verification of the accuracy of information shown on this map.



10 March 2014
Jefferson County
Planning Division
P.O. Box 100
Hillsboro, MO 63050

- Rivers
- Creeks, Streams
- Jefferson County Boundary
- Interstate
- US Highway
- State Highway
- County Road
- Festus Special Road
- Private Street
- City Street
- Incorporated Cities, Towns, Villages
- Lakes

- District 1: Don Bickowski
- District 2: Renee Reuter
- District 3: Bob Boyer
- District 4: George Engelbach
- District 5: Teresa "Terri" Kreidler
- District 6: Cliff Lane
- District 7: Kelly Waymon

